



# Memo

---

TO: Mayor Manier and City Council  
FROM: Ed Andrews, Public Works Director  
DATE: February 2, 2018  
SUBJECT: Budgeted Replacement at Sewer Treatment Plant (STP) #2  
for Tekleen Automatic Filter & Supporting Items

---

## **EXECUTIVE SUMMARY:**

In the current budget a provision was made for the replacement of the failed automatic filter in the Return Activated Sludge (RAS) building at Sewer Treatment Plant (STP) #2. This allowance was made under item 501-00-800-3000: Purchase System for \$20,000 and anticipates this equipment purchase and also supporting plumbing / piping services to be engaged once the equipment is received.

Staff has worked with Strand Engineering to identify a suitable replacement unit that should be more accommodating to the use of reclaimed water for the backwash operations. Due to the propriety nature of the unit and installation constraints, it is my recommendation that Council approve the purchase of the Tekleen filter and supporting items as listed in the attached quotation, in the amount of **\$13,400**.

This matter has been placed on the City Council consent agenda of Monday, February 5<sup>th</sup>, 2018 for review and approval.

cc: File

# Quotation #55285

Date: 1/31/2018

**TEKLEEN®**

**AUTOMATIC FILTERS, INC.**

2672 S. La Cienega Blvd.

Los Angeles, CA 90034

(310) 839-2828 (800) 336-1942

Fax 310-839-6878

www.tekleen.com info@tekleen.com

**Mr. Brian Molenaar**  
**Strand Associates, Inc.**

910 W. Wingra Dr.

Madison WI 53715

Ph: 608-251 4843

Fax: 608-251 8655

Email: brian.molenaar@strand.com

Rep: Crane Eng Inds

Request Date: Advise

Delivery: 6 weeks, subject to prior sale

Shipment: Ex-Works - Los Angeles, CA - USA

Via: Advise

Notes: This quote is valid for 30 days.

**RE: Secondary Treated Effluent, Washington, IL**

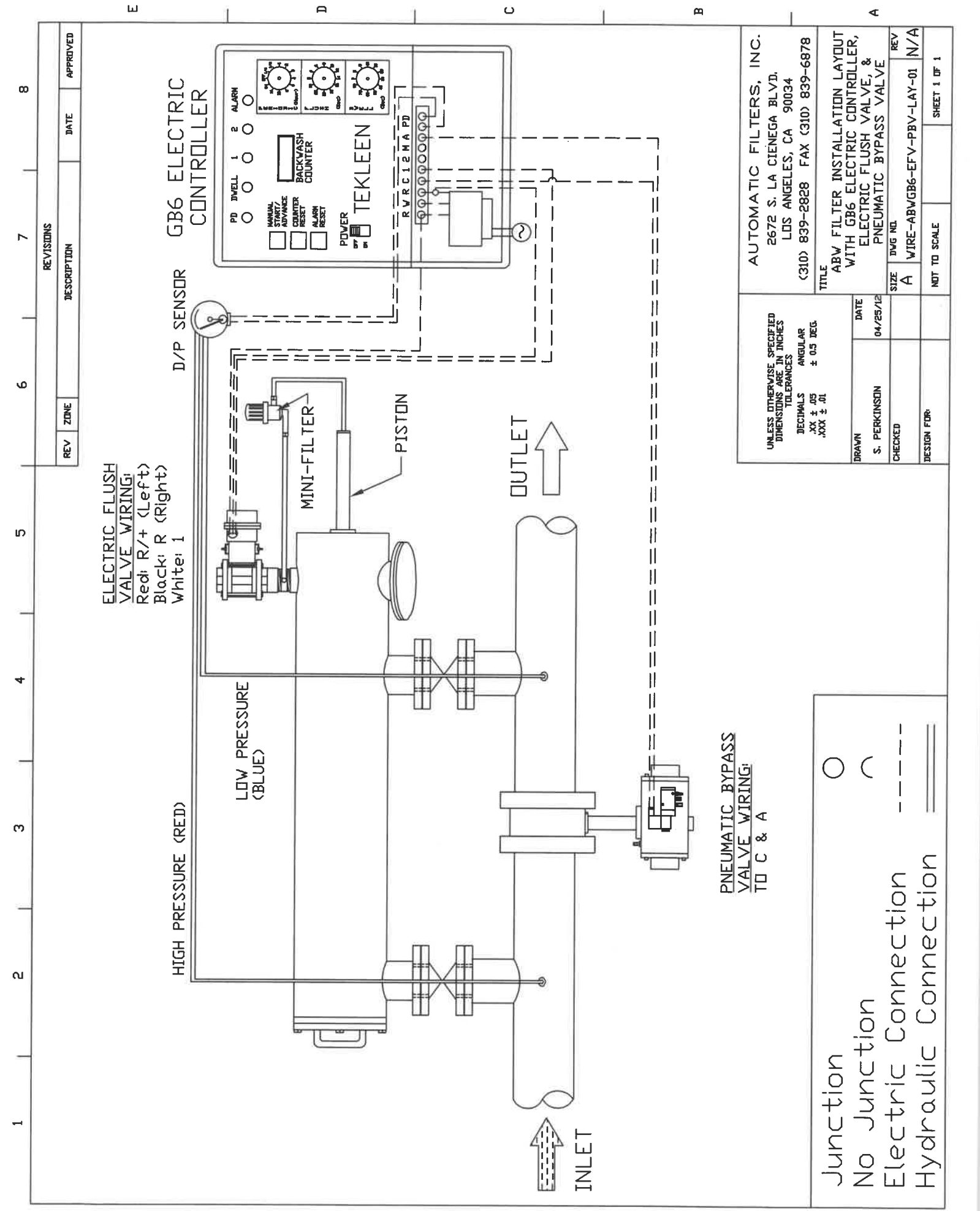
**4", 100 gpm, 55 psi, 75µ Wedge, Pump Seal**

**Mike Baxter**

Item #	Part #	Description	Qty	Unit Price	Amount
1.00	ABW4-LPE	<b>Automatic Filter From SST 304.</b> 4" inlet/outlet ANSI class 150# flanges, 1" flushing ball valve. Designed in accordance with ASME pressure vessel Code, Section VIII for 150 psi, 160°F . 2.5 Sq.Ft. 75µ 316L Wedge Wire screen. 250lb. 50" x20"x30"	1	\$7,900	\$7,900
2.00	GB6-NEMA4	Electronic Backwash Controller in NEMA 4 (IP65) Plastic box. Rinsing by differential pressure, timer or manual. Complete with d/p sensor, backwash counter, emergency alarm. 110 VAC 10 amp, output 24 <b>Kill board</b> VAC, 12" x 12" x 7" 10#	1	\$2,000	\$2,000
3.00	28-4	Pressure relief and by-passing valve. If the filter rinses more than 3 times in 2 minutes, we call it emergency conditions. The GB6 controller will signal to open the 4" by-pass valve. Red alarm light on the controller and 24 VAC signal will come on.	1	\$2,000	\$2,000
4.00	ENGR	Application engineer with automatic water filtration experience. He will see the start up of the filter and train the employees on the operation of the filter. Parts are not included. \$1,500 day plus travel and local accommodations expenses	1	\$1,500	\$1,500
5.00	WARR	This filter and it's components are complete with a one year limited manufacturers warrantee excluding freight & labor from the date of the start up. Screen bursting pressure is 150 psig (10 bar) Differential. Unless otherwise noted.	1		\$0
Terms: Advise			<b>Subtotal</b>		\$13,400
			<b>TOTAL</b>		<b>\$13,400NET</b>

Name: Gideon Brunn

Signature: \_\_\_\_\_



REVISIONS			DATE		APPROVED	
REV	ZONE	DESCRIPTION				

ELECTRIC FLUSH VALVE WIRING:  
Red: R/+ (Left)  
Black: R (Right)  
White: 1

GB6 ELECTRIC CONTROLLER

TEKLEEN

RVRC12MA PD

UNLESS OTHERWISE SPECIFIED  
DIMENSIONS ARE IN INCHES  
TOLERANCES

DECIMALS  
.XX ± .05  
.XXX ± .01

ANGULAR  
± 0.5 DEG

DRAWN  
S. PERKINSON  
CHECKED  
DESIGN FOR:

DATE  
04/25/12

SIZE  
A

WIRE-ABVGB6-EFV-PBV-LAY-01

NOT TO SCALE

SHEET 1 OF 1

REVISIONS

DATE

APPROVED

DESCRIPTION

REV

ZONE

DATE

APPROVED

DESCRIPTION

REV

ZONE

DATE

APPROVED

DESCRIPTION

REV

ZONE

DATE

APPROVED

DESCRIPTION

REV

ZONE

DATE

APPROVED

DESCRIPTION

REV

ZONE

DATE

APPROVED

DESCRIPTION

REV

ZONE

DATE

APPROVED

DESCRIPTION

REV

ZONE

DATE

APPROVED

DESCRIPTION

REV

ZONE

DATE

APPROVED

DESCRIPTION

REV

ZONE

DATE

APPROVED

DESCRIPTION

REV

ZONE

DATE

APPROVED

DESCRIPTION

REV

ZONE

DATE

APPROVED

DESCRIPTION

REV

ZONE

DATE

APPROVED

DESCRIPTION

REV

ZONE

DATE

APPROVED

DESCRIPTION

REV

ZONE

DATE

APPROVED

DESCRIPTION

REV

ZONE

DATE

APPROVED

DESCRIPTION

REV

ZONE

DATE

APPROVED

DESCRIPTION

REV

ZONE

DATE

APPROVED

DESCRIPTION

REV

ZONE

DATE

APPROVED

DESCRIPTION

REV

ZONE

DATE

APPROVED

DESCRIPTION

REV

ZONE

DATE

APPROVED

DESCRIPTION

REV

ZONE

DATE

APPROVED

DESCRIPTION

REV

ZONE

DATE

APPROVED

DESCRIPTION

REV

ZONE

DATE

APPROVED

DESCRIPTION

REV

ZONE

DATE

APPROVED

DESCRIPTION

REV

ZONE

DATE

APPROVED

DESCRIPTION

REV

ZONE

DATE

APPROVED

DESCRIPTION

REV

ZONE

DATE

APPROVED

DESCRIPTION

REV

ZONE

DATE

APPROVED

DESCRIPTION

REV

ZONE

DATE

APPROVED

DESCRIPTION

REV

ZONE

DATE

APPROVED

DESCRIPTION

REV

ZONE

DATE

APPROVED

DESCRIPTION

REV

ZONE

DATE

APPROVED

DESCRIPTION

REV

ZONE

DATE

APPROVED

DESCRIPTION

REV

ZONE

DATE

APPROVED

DESCRIPTION

REV

ZONE

DATE

APPROVED

DESCRIPTION

REV

ZONE

DATE

APPROVED

DESCRIPTION

REV

ZONE

DATE

APPROVED

DESCRIPTION

REV

ZONE

DATE

APPROVED

DESCRIPTION

REV

ZONE

DATE

APPROVED

DESCRIPTION

REV

ZONE

DATE

APPROVED

DESCRIPTION

REV

ZONE

DATE

APPROVED

DESCRIPTION

REV

ZONE

DATE

APPROVED

DESCRIPTION

REV

ZONE

DATE

APPROVED

DESCRIPTION

REV

ZONE

DATE

APPROVED

DESCRIPTION

REV

ZONE

DATE

APPROVED

DESCRIPTION

REV

ZONE

DATE

APPROVED

DESCRIPTION

REV

ZONE

DATE

APPROVED

DESCRIPTION

REV

ZONE

DATE

APPROVED

DESCRIPTION

REV

ZONE

DATE

APPROVED

DESCRIPTION

REV

ZONE

DATE

APPROVED

DESCRIPTION

REV

ZONE

DATE

APPROVED

DESCRIPTION

REV

ZONE

DATE

APPROVED

DESCRIPTION

REV

ZONE

DATE

APPROVED

DESCRIPTION

REV

ZONE

DATE

APPROVED

DESCRIPTION

REV

ZONE

DATE

APPROVED

DESCRIPTION

REV

ZONE

DATE

APPROVED

DESCRIPTION

REV

ZONE

DATE

APPROVED

DESCRIPTION

REV

ZONE

DATE

APPROVED

DESCRIPTION

REV

ZONE

DATE

APPROVED

DESCRIPTION

REV

ZONE

DATE

APPROVED

DESCRIPTION

REV

ZONE

DATE

APPROVED

DESCRIPTION

REV

ZONE

DATE

APPROVED

DESCRIPTION