



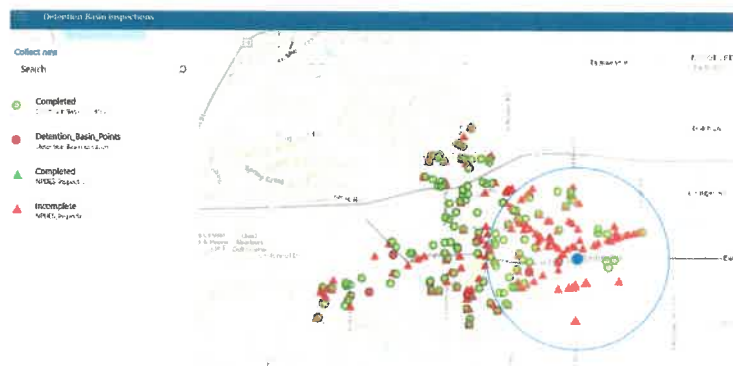
Memo

TO: Committee of the Whole
FROM: Ed Andrews, Public Works Director
DATE: May 18, 2018
SUBJECT: Annual NPDES Phase 2 Storm Water Update

The US EPA and Illinois EPA have previously adopted a permit requirement for discharges from small municipal separate storm sewers known as MS4s. This permitting was originally obtained by the City of Washington in 2003, as required by the agency. It was subsequently renewed in 2009 and again in 2014.

The City of Washington is also a member of Central Illinois Committee on NPDES (CICN) to coordinate and leverage local efforts concerning this permitting. The proposed best management practices (BMPs) outlined in the annual report are a continuation of efforts that the City and CICN have initiated and maintained over the years of the program.

Efforts in this past year included a formal annual cleaning checklist of basin under the City's jurisdiction and a review of all basins (public and private) within the municipality for general upkeep and conformance. This has been accomplished with great success using an inhouse inspection app, shown below.



This memorandum serves to update the Council on this program.