

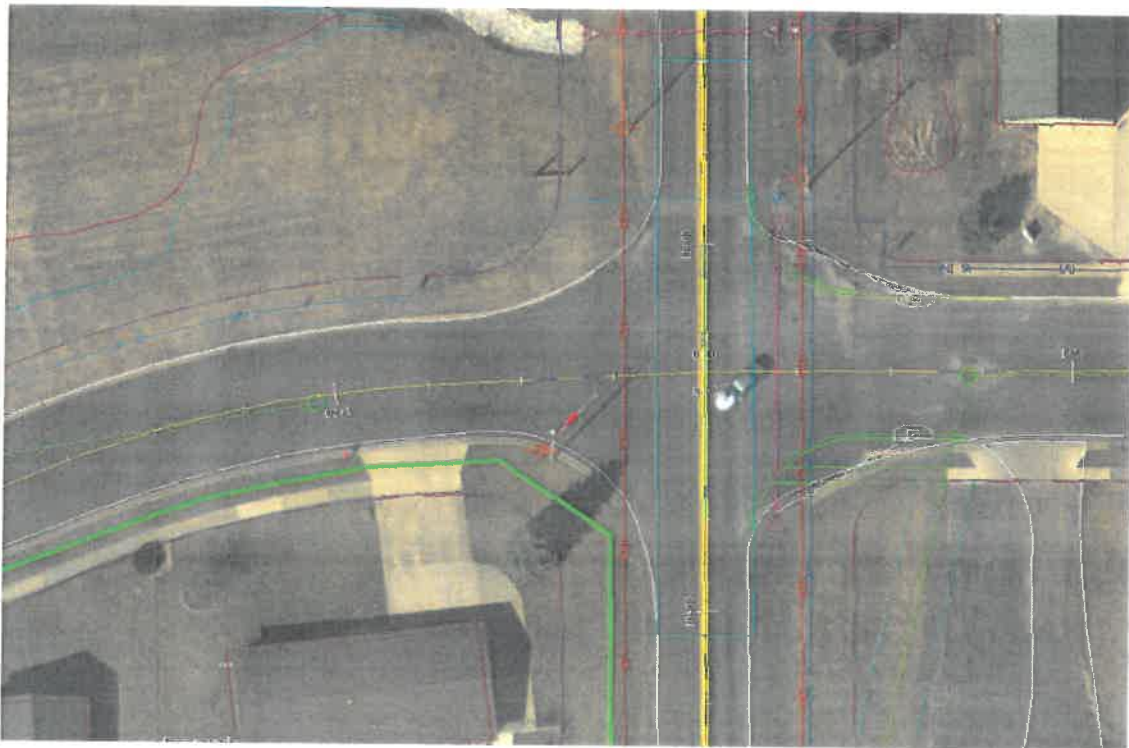


Memo

TO: Mayor Manier and City Council
FROM: Ed Andrews, Public Works Director
DATE: August 3rd, 2018
SUBJECT: Change Order #1: Drainage Upgrades for Ragan Court & School St
Section No: 18-00000-02-RS

At the Special Council Meeting of July 9th, 2018 Council awarded the above to RA Cullinan under a unit price contract for a total of \$319,787.46. Planned improvements included a provision for the replacement of the culvert under Ragan Court, but additional field investigation revealed that the buried culvert under Ragan Court was concrete pipe and at an elevation lower than the crossroad culvert under School Street. Additionally, flow was obstructed by the interconnect hydrant between Washington and North Tazewell Water Districts. City crews relocated the hydrant, but additional measures are recommended to correct drainage on Ragan Court.

Staff prepared a request for agreed unit pricing (AUP) on the following work items:



Add 1:

- Deduct 92LF of 12" Ø CMP at STA 8+10 (RT), deduct 2-12" Ø CMP FES
- Add supply & install of 46LF of 18" Ø CMP at STA 11+45 (Crossroad), add 2-18" Ø CMP FES
- Patching and flowable fill will be at current unit prices.
- Work will be conducted under full road closure. Detour traffic to Lexington, Summit and Centennial.

Add 2:

- Remove pavement and concrete gutter pan, approximately 425SF for each of the NE & SE quad at Ragan Ct to facilitate 30' radius return
- Extend existing 18" Ø Conc SS 8LF (1 stick) on north and add 2-18" Ø Conc FES to north and south ends
- Add 150LF of B6.12 PCC CC&G, gap future ADA ramp (do NOT construct at this time) and provide 5' transition ends where radius blends to meet aggregate shoulders.
- Add 2 G-1 Inlets as shown.
- Install each with daylighting to U/S (40') and D/S (40') end w/ 12" Ø PVC SS, approximate runs of pipe = 80LF.

The quoted total for the corrective measures is **\$32,958** and is detailed in the attachment. This work will also be discussed in more detail with Public Work Committee before Council.

This matter has been placed on the City Council meeting agenda of Monday, August 6th, 2018 for review and approval consideration.



121 West Park St. - P.O. Box 166
Tremont, Illinois 61568

CONCRETE GRAVEL & BITUMINOUS PAVEMENTS
CONCRETE AND STEEL BRIDGES AND CULVERTS
PILE DRIVING - EXCAVATING - DRAINAGE DITCHES

OFFICE PHONE 925-2711
Area Code 309 PEORIA 676-4343
Area Code 309 PEKIN 346-7262
FAX 309-925-7131

Quote To: City of Washington, IL

Job Name: School Street
Project Location: Washington IL
Date of Plans: 05/30/18
Bid Date: July 6, 2018
FSA: 070618SCWASH
Addendum: Addendum #1

Attn:
Phone:
Mobile:
Fax:

ITEM	DESCRIPTION	QUANTITY	UNIT	UNIT PRICE	AMOUNT
5	DITCH GRADING	1,635.00	LF	17.79	29,086.65
10	EXCELSIOR BLANKET	1,090.00	SY	2.00	2,180.00
15	EROSION CONTROL-DITCH CHECKS	16.00	EA	160.07	2,561.12
20	SEEDING- CL 2A	0.94	ACRE	5,250.00	4,935.00
25	BIT SURF REM-COLD MILL	5,296.00	SY	6.07	32,146.72
30	PIPE CULVERT REMOVAL	386.00	LF	32.20	12,429.20
35	FLOWABLE FILL	172.00	CY	52.18	8,974.96
40	PIPE CULVERTS 12" DIA, TY 1	474.00	LF	57.72	27,359.28
45	FLARED END SECTIONS, 12" DIA	28.00	EA	235.17	6,584.76
50	MANHOLE ADJUSTMENTS	6.00	EA	1,804.44	10,826.64
55	AGG SHOULDERS TY	214.00	TON	57.68	12,343.52
60	MIX FOR CRACKS & FLNGWY	3.00	TON	830.65	2,491.95
65	BIT MTRL PR CT	713.70	GAL	9.19	6,558.90
70	HMA INCIDENTAL, N50	66.00	TON	214.87	14,181.42
75	HMA LEVELING BINDER, MM N50	175.00	TON	133.77	23,409.75
80	HMA SURF CRSE, N50	841.00	TON	114.41	96,218.81
85	SHORT TERM PVT MRK LINE 4"	733.00	LF	1.07	784.31
90	POLYUREA PVT MRK LINE-4"	12,395.00	LF	1.10	13,634.50
95	POLYUREA PVT MRK LINE-12"	83.00	LF	3.31	274.73
100	TC&P-COMPLETE	1.00	LS	12,805.24	12,805.24
110	TOTAL BASE BID				\$319,787.46

ITEM	DESCRIPTION	QUANTITY	UNIT	UNIT PRICE	AMOUNT
1000	**** Add 1 ****				
1010	PIPE CULVERTS 12" DIA, TY 1 (Deduct)	-92.00	LF	57.72	-5,310.24
1015	FLARED END SECTIONS, 12" DIA	-2.00	EA	235.17	-470.34
1020	PIPE CULVERTS 18" DIA, TY 1 (Add)	46.00	LF	80.95	3,723.70
1030	FLARED END SECTIONS, 18" DIA	2.00	EA	441.62	883.24
1040	TRAFFIC CONTROL	1.00	LS	1,249.83	1,249.83
	Total Add 1				\$76.19
1100	**** Add 2 ****				
1110	REMOVE PAVT & CONCRETE GUTTER PAN	850.00	SF	2.13	1,810.50
1120	PIPE CULVERTS, 18" DIA, RCP	8.00	LF	100.56	804.48
1130	RCFES, 18"	2.00	EA	1,102.82	2,205.64
1140	B-6.12 PCC CC&G	150.00	LF	105.58	15,837.00
1150	G-1 INLET	2.00	EA	3,438.62	6,877.24
1160	STORM SEWERS, 12" DIA, PVC SDR 26	80.00	LF	66.84	5,347.20
	Total Add 2				\$32,882.06
2000	**** AUP Prices ****				
2010	Trench Backfill - CA 6	344.00	TON	20.50	7,052.00
GRAND TOTAL					\$359,797.71

NOTES:

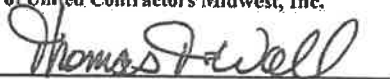
Thank you for the opportunity to bid on this project. We look forward to working with you.

Tom Wall

R. A. Cullinan & Son

a division of United Contractors Midwest, Inc.

Signed



Signed

Date

7/27/18

Date
