

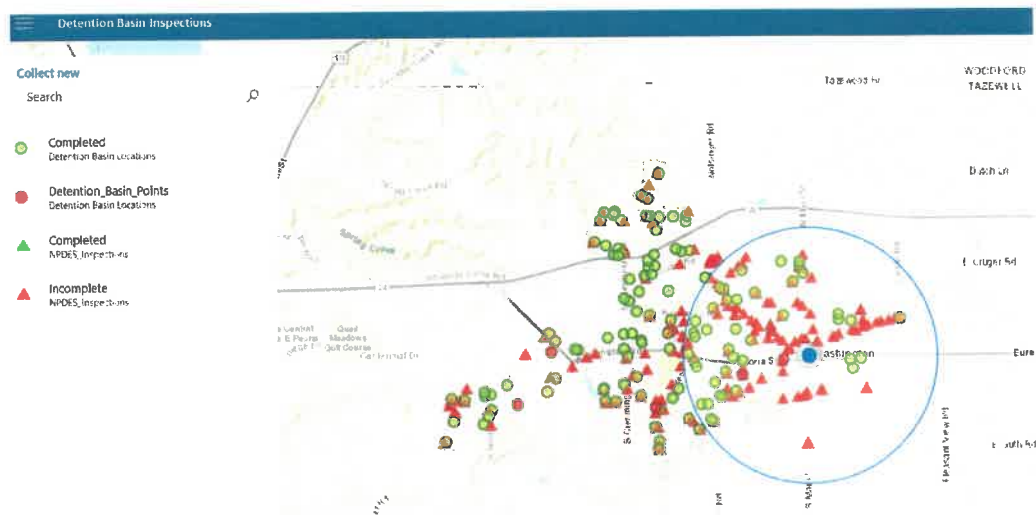


Memo

TO: Committee of the Whole
FROM: Ed Andrews, Public Works Director
DATE: April 5, 2019
SUBJECT: Annual NPDES Phase 2 Storm Water Update

The US EPA and Illinois EPA have previously adopted a permit requirement for discharges from small municipal separate storm sewers known as MS4s beginning in 2003. The City of Washington is also a member of Central Illinois Committee on NPDES (CICN) to coordinate and leverage local efforts concerning this permitting. The proposed best management practices (BMPs) outlined in the annual report are a continuation of efforts that the City and CICN have initiated and maintained over the years of the program.

These efforts in this past year include the second round of a formal annual cleaning checklist of basin under the City's jurisdiction and a review of all basins (public and private) within the municipality for general upkeep and conformance. This has been accomplished with good success using an inhouse inspection app, shown below.



This tracking of inspections recently proved to be of good assistance with a complaint received in March of this year from a neighboring resident to the basin at 910 School Street. They were asserting that the Owner of the private basin was not keeping up the maintenance of the basin.

