

CITY OF WASHINGTON

PLANNING & DEVELOPMENT DEPARTMENT

301 Walnut St. · Washington, IL 61571

Ph. 309-444-1135 · Fax 309-444-9779

<http://www.washington-illinois.org>

joliphant@ci.washington.il.us

MEMORANDUM

TO: Mayor Manier and Committee of the Whole
FROM: Jon R. Oliphant, AICP, Planning & Development Director
SUBJECT: Square Streetscape Phase 1 Engineering Update
DATE: October 9, 2019

Summary: Staff and the City's contracted consulting engineer, Hutchison Engineering, will provide an update on the Square streetscape Phase 1 engineering project at Tuesday's Committee of the Whole meeting. Great input was received at the September 5 open house at Five Points. The two primary items that some people were concerned with were the decrease in on-street parking spaces and the loss of some greenspace within the interior part of the Square.

Background: The Hutchison team took the input and were able to reconfigure the design so that only 11 spaces would be lost as compared to the 15 that were shown at the open house. The majority of these are on the north and south sides as a result of the addition of pedestrian refuge islands and required ADA spaces. The other reduction would be to eliminate spaces that are currently in place that allow for vehicles to back into crosswalks, which is a safety hazard. The City has gained 46 public parking spaces in the last three years on the northwest and southeast sides of the Square and opportunities are continually explored for the addition of more spaces.

Additionally, the interior part of the Square was redesigned in order to reduce the loss of greenspace to about 10 percent. This is drafted for the modern design template that accommodates the necessary turning radii for WB-65 trucks around the Square as well as to ensure the safety of the pedestrians into the area. Staff and Hutchison have been in continual contact with IDOT and the State Historic Preservation Office (SHPO) to see if any change to the size and shape of the coping wall can be completed. The hope is to have a firm response from SHPO as soon as possible in order to understand if a reconfiguration of the wall can happen and to incorporate that into the draft Project Development Report.

A meeting was held with many of the Square business and property owners after the open house and the attendees were supportive of the changes that are attached.

Attachments

Washington's Downtown Square

Concept Plan C
September 17, 2019

Legend



Scored Concrete Sidewalk



Ornamental Fence



Bench (relocated)



Planter (relocated)



Trash Receptacle (relocated)



Bicycle Rack (new)



Picnic Tables (new)



Information Kiosk / Parking Sign



Light Fixture (relocated/new)



Existing Flagpole



Existing Drinking Fountain



Soldier Memorial - Cannon Balls (relocated)



Washington Bell (relocated)



Town & Country Gardeners Monument (relocated)



Public Art (by Others)



Existing Deciduous Tree



Existing Evergreen Tree



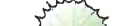
New Deciduous Tree



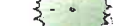
Plant Bed



Turf Grass



Scored Concrete Sidewalk



Relocated Planter



Relocated Bench



Information Kiosk and Parking Sign



Bicycle Rack



Scored Concrete Sidewalk



Relocated Light Fixture



Relocated Trash Receptacle



Scored Concrete Sidewalk



Relocated Planter



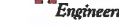
Relocated Bench



Information Kiosk and Parking Sign



Bicycle Rack



Scored Concrete Sidewalk



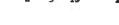
Relocated Light Fixture



Relocated Trash Receptacle



Scored Concrete Sidewalk



Relocated Planter



Relocated Bench



Information Kiosk and Parking Sign



Bicycle Rack



Scored Concrete Sidewalk



Relocated Light Fixture



Relocated Trash Receptacle

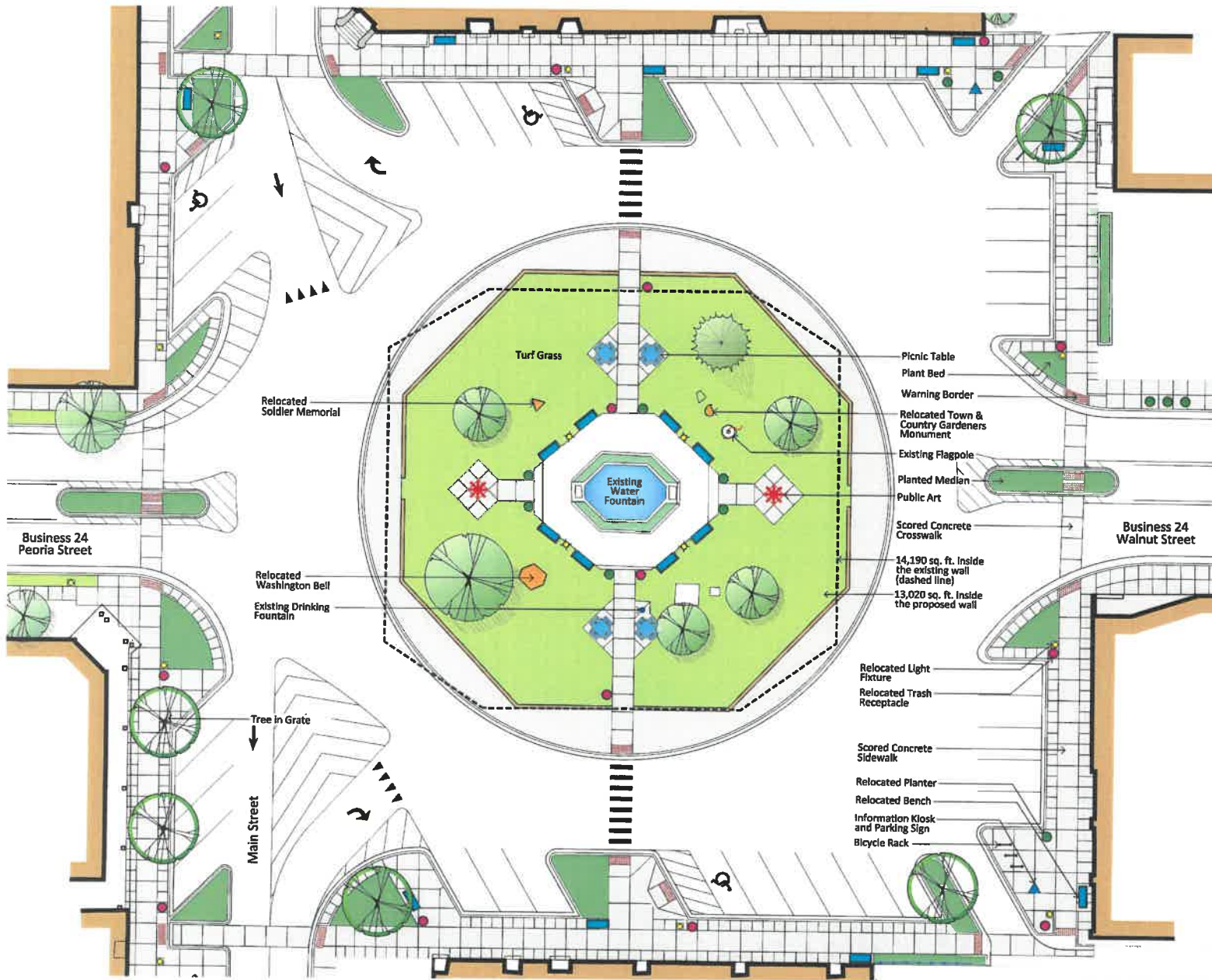


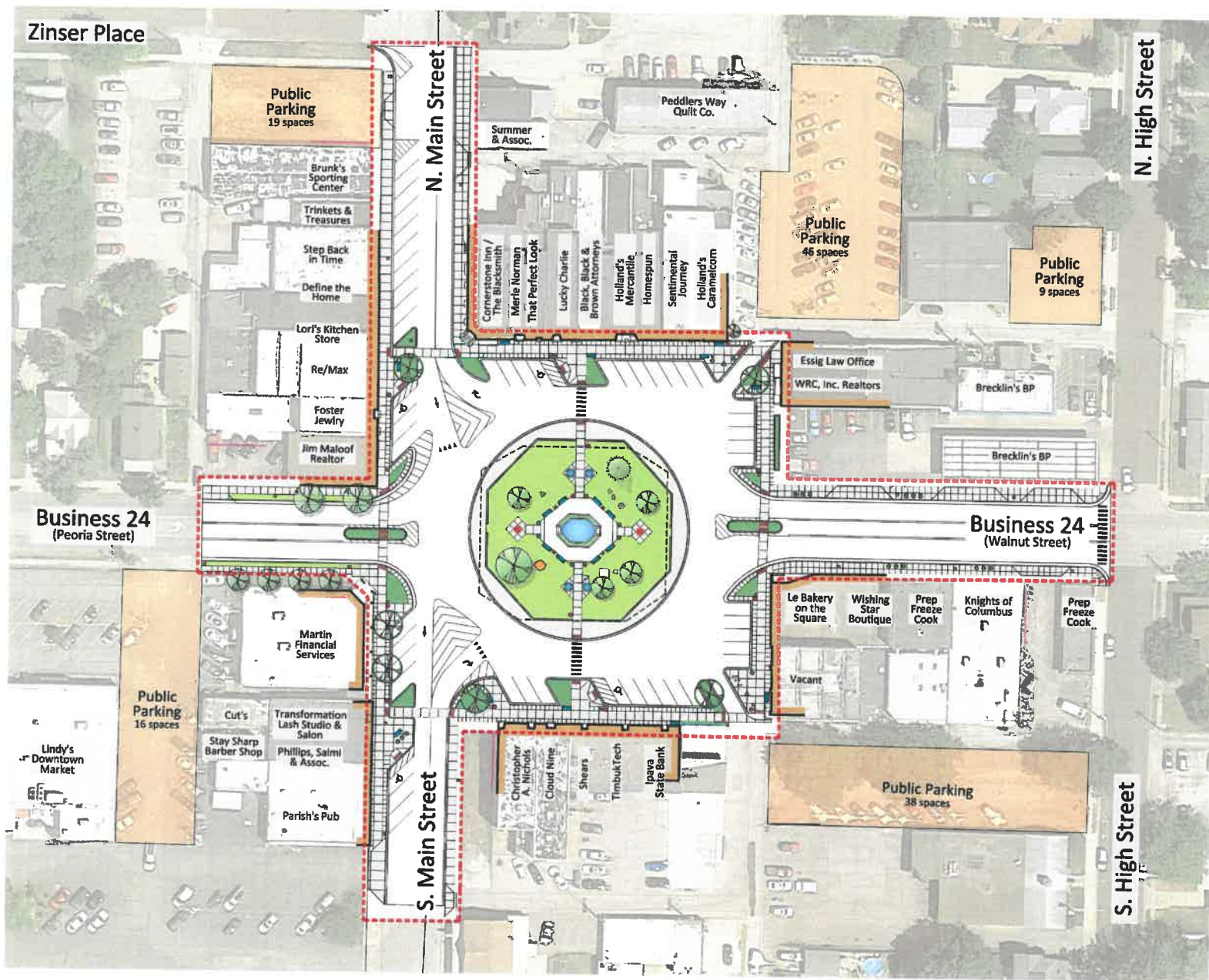
Scored Concrete Sidewalk

**Hutchison
Engineering, Inc.**

MASSIMO ASSOCIATES
ARCHITECTS

Graphic Scale
0 5' 10' 20' 25' N





Washington's Downtown Square

Concept Plan C
September 17, 2019

Legend

- Project Boundary
- Public Parking Lot
- Scored Concrete Sidewalk
- Ornamental Fence
- Bench (relocated)
- Planter (relocated/new)
- Trash Receptacle (relocated)
- Bicycle Rack (new)
- Picnic Tables (new)
- ▲ Information Kiosk / Parking Sign
- ▲ Light Fixture (relocated/new)
- Existing Flagpole
- Existing Drinking Fountain
- ▲ Soldier Memorial - Cannon Balls (relocated)
- Washington Bell (relocated)
- Town & Country Gardeners Monument (relocated)
- * Public Art (by Others)
- * Building Mural (by Others)
- Existing Deciduous Tree
- Existing Evergreen Tree
- New Deciduous Tree
- Plant Bed
- Turf Grass

**Hutchison
Engineering, Inc.**

Maxim & Associates
Landscape Architecture

Graphic Scale
0' 5' 10' 15' 20' 25' 30' 35' 40' 45' 50' 55' 60' 65' 70' 75' 80' 85' 90' 95' 100'