



CITY OF WASHINGTON, ILLINOIS
City Council Agenda Communication

Meeting Date: October 17, 2022

Prepared By: Joanie Baxter, CPA – Finance Director *JB*

Agenda Item: Electrical Supplier Bid for City Facilities and Street Lights

Explanation: The energy contract for the City facilities expires in December 2022 and thus Good Energy has shopped the market and brought us soft quotes from various vendors. These prices change daily and thus I have asked them to update on October 14th for Council approval on the 17th. As indicated by the attached, Direct Energy is the low bid at \$.09536 per kWh as compared to the Ameren rate of \$.14085 per kWh. Good Energy recommends a 2-year term and will also be including street lights with the facilities.

As of distribution time I am still awaiting the bid results and thus will bring the final quotes to the Council meeting.

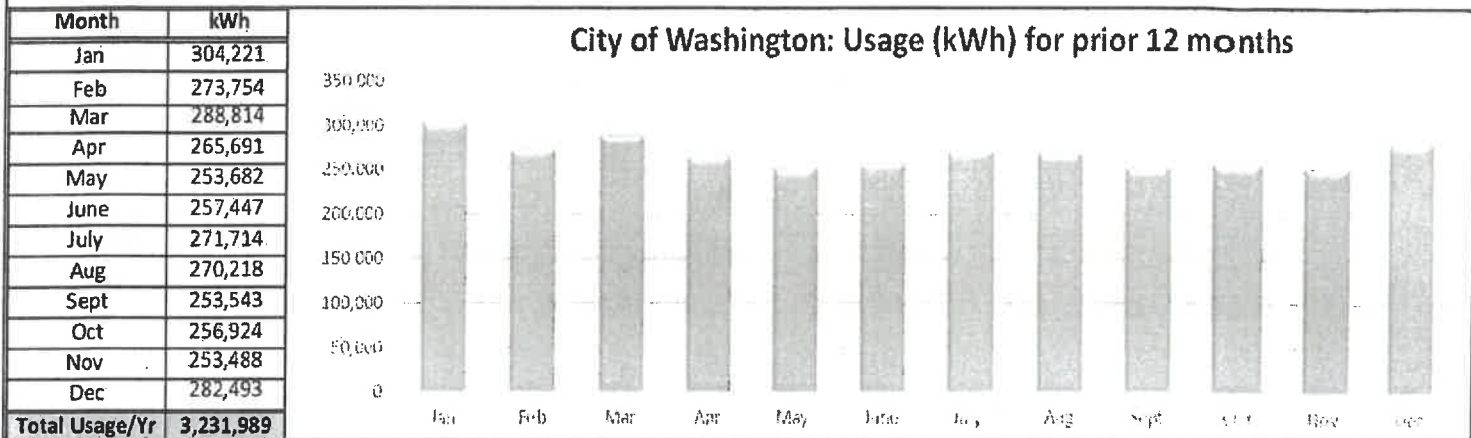
Fiscal Impact: Dependent on final quote amounts. Will be available Monday night at the meeting.

Recommendation/Committee Discussion Summary: Staff recommends approval of the low bid.

Action Requested: Approval of the low bid as provided by Good Energy.

| | |
|-----------------------|----------------------------|
| Legal Entity Name: | City of Washington |
| Market: | MISO |
| Utility - State: | Ameren-IL |
| Number of Accounts: | 19 |
| Pricing-Product Type: | INDICATIVE: FIXED Electric |

| | |
|------------------|------------------------|
| Pricing Date: | October 5, 2022 |
| Good Energy Rep: | Charles de Casteja |
| Contact Phone: | (212) 691-9467 |
| Contact Email: | charles@goodenergy.com |
| Prepared by: | Jean Ketchandji |



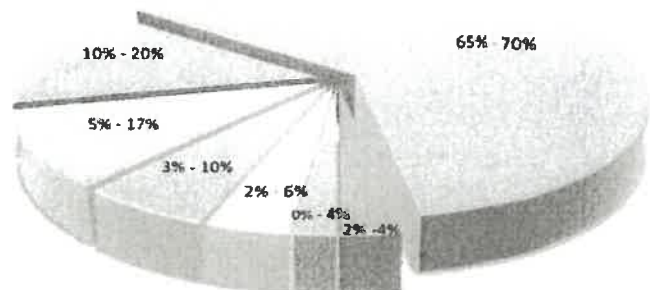
| Competitive FIXED Supply Cost per kWh | | | | |
|---------------------------------------|-----------|-----------|-----------|------------|
| Start Date | Nov-22 | Nov-22 | Nov-22 | Nov-22 |
| End Date | Nov-23 | Nov-24 | Nov-25 | Nov-26 |
| Contract Term (Months) | 12 | 24 | 36 | 48 |
| Estimated kWhs | 3,231,989 | 6,463,978 | 9,695,967 | 12,927,956 |
| AEP Energy | \$0.10749 | \$0.09793 | \$0.09401 | \$0.09323 |
| * Direct Energy | \$0.10523 | \$0.09536 | \$0.09063 | N/A |
| Constellation Energy | \$0.11131 | \$0.10095 | \$0.96310 | \$0.94390 |
| Homefield Energy | \$0.11024 | \$0.09875 | \$0.09392 | \$0.91890 |
| MidAmerican Energy | \$0.11234 | \$0.10288 | \$0.09832 | \$0.09632 |

| Best Supplier Offer Rate - FIXED | | | | |
|----------------------------------|---------------|----------------------|---------------|--------------|
| Best Supplier | Direct Energy | Direct Energy | Direct Energy | AEP Energy |
| Best Offer Rate (\$/kWh) | \$0.10523 | \$0.09536 | \$0.09063 | \$0.09323 |
| Est. Price to Compare (PTC)* | \$0.13407 | \$0.13394 (4.0% off) | \$0.13394 | \$0.13394 |
| Savings per kWh | \$0.02884 | \$0.03858 | \$0.04331 | \$0.04071 |
| % Savings | 22% | 29% | 32% | 30% |
| Annual Savings | \$93,220.26 | \$124,690.14 | \$139,977.44 | \$131,574.27 |
| Term Savings | \$93,220.26 | \$249,380.27 | \$419,932.33 | \$526,297.09 |

*PTC is based on the weighted average of Ameren BGS2/DS2 Commercial Rate for 2022-2023.

General Summary of Supply Costs

| Components of Electricity Cost | |
|--------------------------------|-----------|
| Energy | 65% - 70% |
| Congestion/Basis | 10% - 20% |
| Capacity | 5% - 17% |
| Misc. | 3% - 10% |
| Ancillary Services | 2% - 6% |
| Renewables | 0% - 4% |
| Load Following | 2% - 4% |



Disclaimer: This proposal is not a binding offer or contract for the sale of electricity and/or natural gas and related services between the Parties. Either Party may terminate discussions regarding this proposal at any time. All costs and prices are indicative and are exclusive of Utility charges and State and Local Taxes. These charges will vary each month based on the usage/load profile and aggregated costs for each account.

| # | Account Number | Utility (LDC) | Rate Class | Est. Annual Usage (kWh) | Service Address | City | State | Zip |
|----|----------------|---------------|------------|-------------------------|-----------------------------------|------------|-------|-------|
| 1 | '0923001770 | Ameren | DS3A | 1,575,837 | 955 ERNEST ST | Washington | IL | 61571 |
| 2 | '2189124652 | Ameren | DS3A | 540,180 | 210 N MAIN ST WTR TREATMNT PLANT1 | Washington | IL | 61571 |
| 3 | '0122166002 | Ameren | DS3A | 384,392 | 107 LEGION RD WELLS 11/12 | Washington | IL | 61571 |
| 4 | '2052528413 | Ameren | DS3A | 339,683 | PLANT2 | Washington | IL | 61571 |
| 5 | '9906538974 | Ameren | DS2 | 154,195 | 115 W JEFFERSON ST | Washington | IL | 61571 |
| 6 | '9670060008 | Ameren | DS2 | 47,145 | 301 WALNUT ST | Washington | IL | 61571 |
| 7 | '2379163009 | Ameren | DS2 | 31,858 | 2269 NORTHRIDGE CT LIFT STATION | Washington | IL | 61571 |
| 8 | '8430900413 | Ameren | DS2 | 28,226 | 118 WASHINGTON SQ | Washington | IL | 61571 |
| 9 | '4146497212 | Ameren | DS2 | 22,711 | 107 LEGION RD | Washington | IL | 61571 |
| 10 | '7072945135 | Ameren | DS2 | 19,357 | 1703 SANTA FE RD | Washington | IL | 61571 |
| 11 | '3780878334 | Ameren | DS2 | 13,840 | CHESTNUT LN | Washington | IL | 61571 |
| 12 | '1667806494 | Ameren | DS2 | 12,893 | 602 OAKWOOD LN UNIT CEME | Washington | IL | 61571 |
| 13 | '0745538332 | Ameren | DS2 | 11,831 | 102 HILLCREST DR BOOSTER STATION | Washington | IL | 61571 |
| 14 | '5077912974 | Ameren | DS2 | 11,024 | DEER LN | Washington | IL | 61571 |
| 15 | '4355153009 | Ameren | DS2 | 8,035 | 1839 AUTUMN RDG LIFT STATION | Washington | IL | 61571 |
| 16 | '6203091530 | Ameren | DS2 | 7,328 | 103 W JEFFERSON ST | Washington | IL | 61571 |
| 17 | '1547390819 | Ameren | DS2 | 4,668 | 123 WASHINGTON SQ UNIT REAR | Washington | IL | 61571 |
| 18 | 0856354971 | Ameren | DS2 | 3,152 | 700 WOODLAND TRL | Washington | IL | 61571 |
| 19 | '0980999934 | Ameren | DS2 | 1,813 | 401 S SUMMIT DR | Washington | IL | 61571 |