



CITY OF WASHINGTON, ILLINOIS

Committee of the Whole Agenda Communication

Meeting Date: December 12, 2022

Prepared By: Jim Snider, City Administrator
Dennis Carr, City Engineer
Jon Oliphant, Planning & Development Director

Agenda Item: Southeast Square On-Street Parking Vacation Consideration

Explanation: The Grist Mill brewpub/restaurant is planned to be open late next year. As part of the planning for the project, the developer, Grist Mill Ventures, has asked for consideration of the removal of the two northern on-street parking spaces closest to the intersecting corner. This would allow for the accommodation of six tables and 24 seats for outdoor dining. The attached ground floor plan shows the approximate location of those tables.

Most of the sidewalks around the Square do not have the necessary width to allow for outdoor tables without keeping a minimum 5' wide pedestrian space and a separation from vehicular parking. The east side of the Square has about 11' between the building facades and the curb. As included in the attached concept plan as part of the Phase I engineering completed by Hutchison Engineering, all of the sidewalk would be subject to eventual replacement with new scored concrete. Plant beds are planned around the bumpouts near the intersections to help soften the hardscape elements and to delineate the pedestrian zones. The bumpouts would be extended further to enhance the safety of the motorists and pedestrians, to accommodate all typical forms of transportation, and to meet modern geometric standards. Also attached are the current planned geometrics for the southeast side with each of the five existing on-street parking spaces and the geometrics if two parking spaces were to be removed.

The sidewalk on both sides of the site figures to be closed during the duration of the Grist Mill project and most of it will almost certainly need to be replaced. The handling of the streetscape near this site can serve as a model for the implementation of other streetscape enhancements around the Square. Maintaining the safety of the pedestrians, customers, and motorists is of utmost importance and measures such as bollards or parklets can be implemented to both physically separate the dining area from the vehicular realm and to demarcate each area more clearly.

Fiscal Impact: According to Hutchison, the rough estimated cost for the replacement of the existing sidewalk on the southeast side of the Square with scored concrete plus the removal and replacement of the two parking spaces is about \$150,000. This cost includes the replacement of all of the sidewalk and parking replacement on the southeast side of the Square and wrapping around part of the north side of the Grist Mill building for the sake of maintaining consistency. It also includes curb replacement, landscaping, and electrical relocation.

Action Requested: Staff seeks feedback on the consideration of the removal of two on-street parking spaces to accommodate outdoor dining.

Architect of Record
209 S. LaSalle Street, Suite 980
Chicago, IL 60604, USA
www.lohanarchitecture.com
312.809.8029

Interiors Architect
Aria Group Architects, Inc.
830 North Boulevard
Oak Park, IL 60301
708.445.8400

Technical Architect
Nevin Hedlund Architects, Inc.
7985 Lake Street
River Forest, IL 60305
708.771.7117

Structural Engineer
TGRWA, llc
600 W. Van Buren St., Suite 900
Chicago, IL 60607
312.341.0055

MEP/FP Engineer
RTM Engineering Consultants
650 E. Algonquin Road, Suite 250
Schaumburg, IL 60173
847.756.4180

Civil Engineer
Austin Engineering Co., Inc.
311 SW Water St., Suite 215
Peoria, IL 61602
773.384.2700

[illegible]

DATE SIGNED:

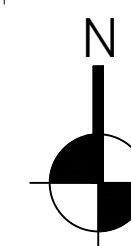
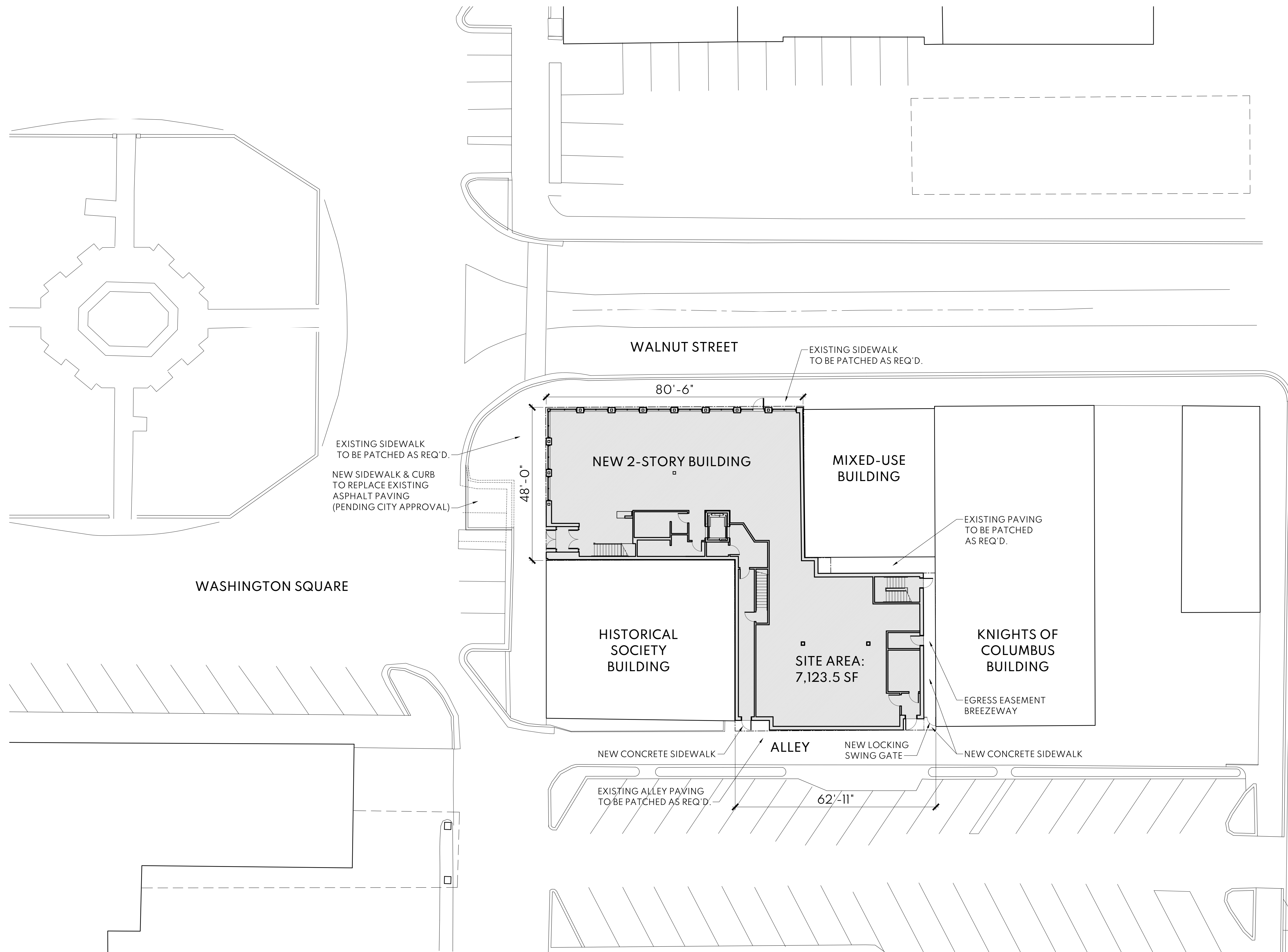
Washington Square Project

PROJECT NUMBER: 22-0

SITE PLAN

SHEET

A1.00



Architect of Record
209 S. LaSalle Street, Suite 980
Chicago, IL 60604, USA
www.lohanarchitecture.com
312.809.8029

Interiors Architect
Aria Group Architects, Inc.
830 North Boulevard
Oak Park, IL 60301
708.445.8400

Technical Architect
Nevin Hedlund Architects, Inc.
7985 Lake Street
River Forest, IL 60305
708.771.7117

Structural Engineer

TGRWA, llc
600 W. Van Buren St., Suite 900
Chicago, IL 60607
312.341.0055

MEP/FP Engineer
RTM Engineering Consultants
650 E. Algonquin Road, Suite 250
Schaumburg, IL 60173
847.756.4180

Civil Engineer
Austin Engineering Co., Inc.
311 SW Water St., Suite 215
Peoria, IL 61602
773.384.2700

[illegible]

DATE SIGNED: _____

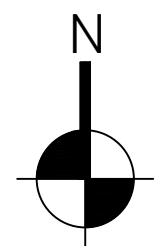
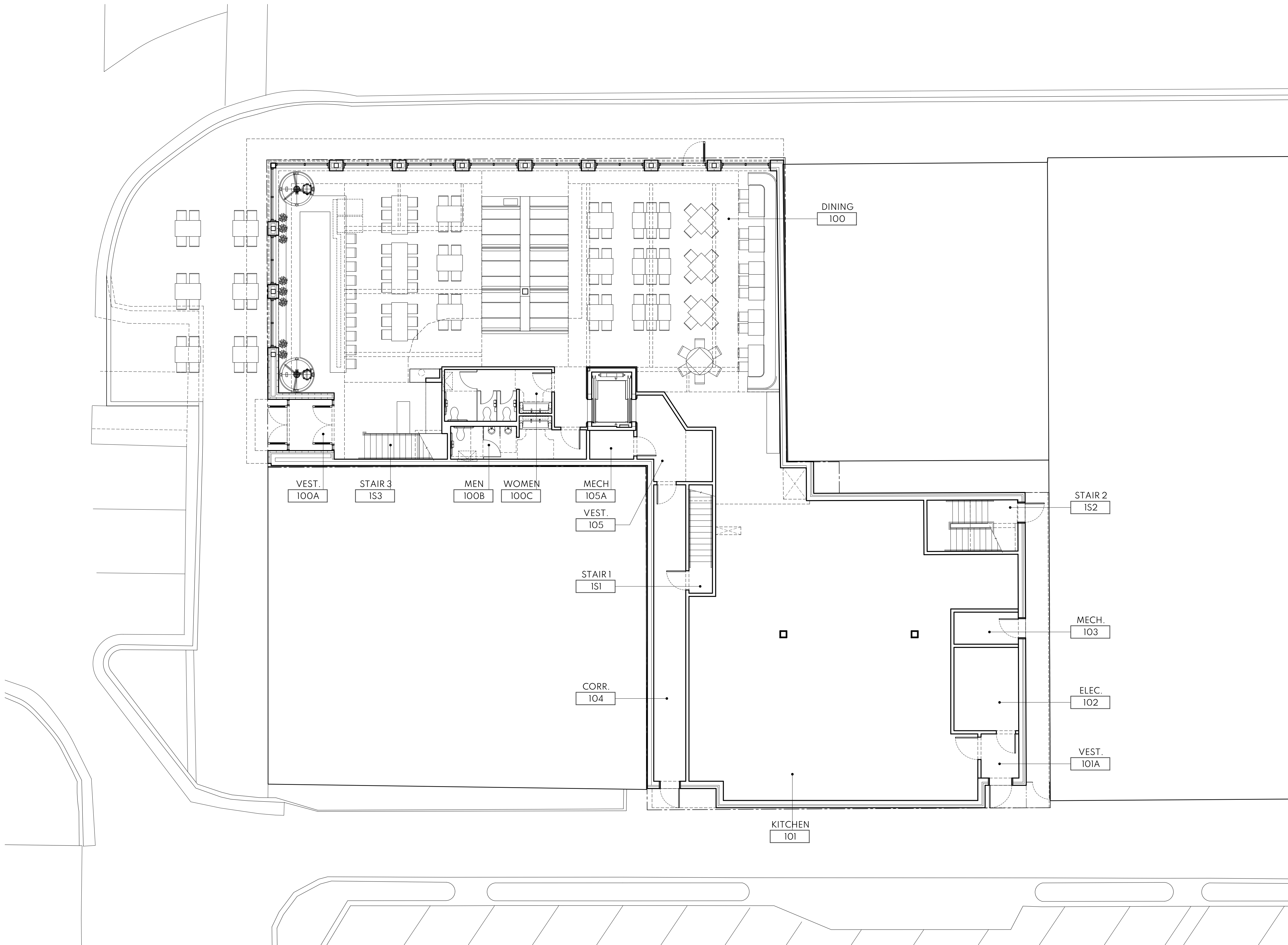
Washington Square Project

PROJECT NUMBER: 22-01

GROUND FLOOR PLAN

SHEET

A1.02



[illegible]

DATE SIGNED: _____

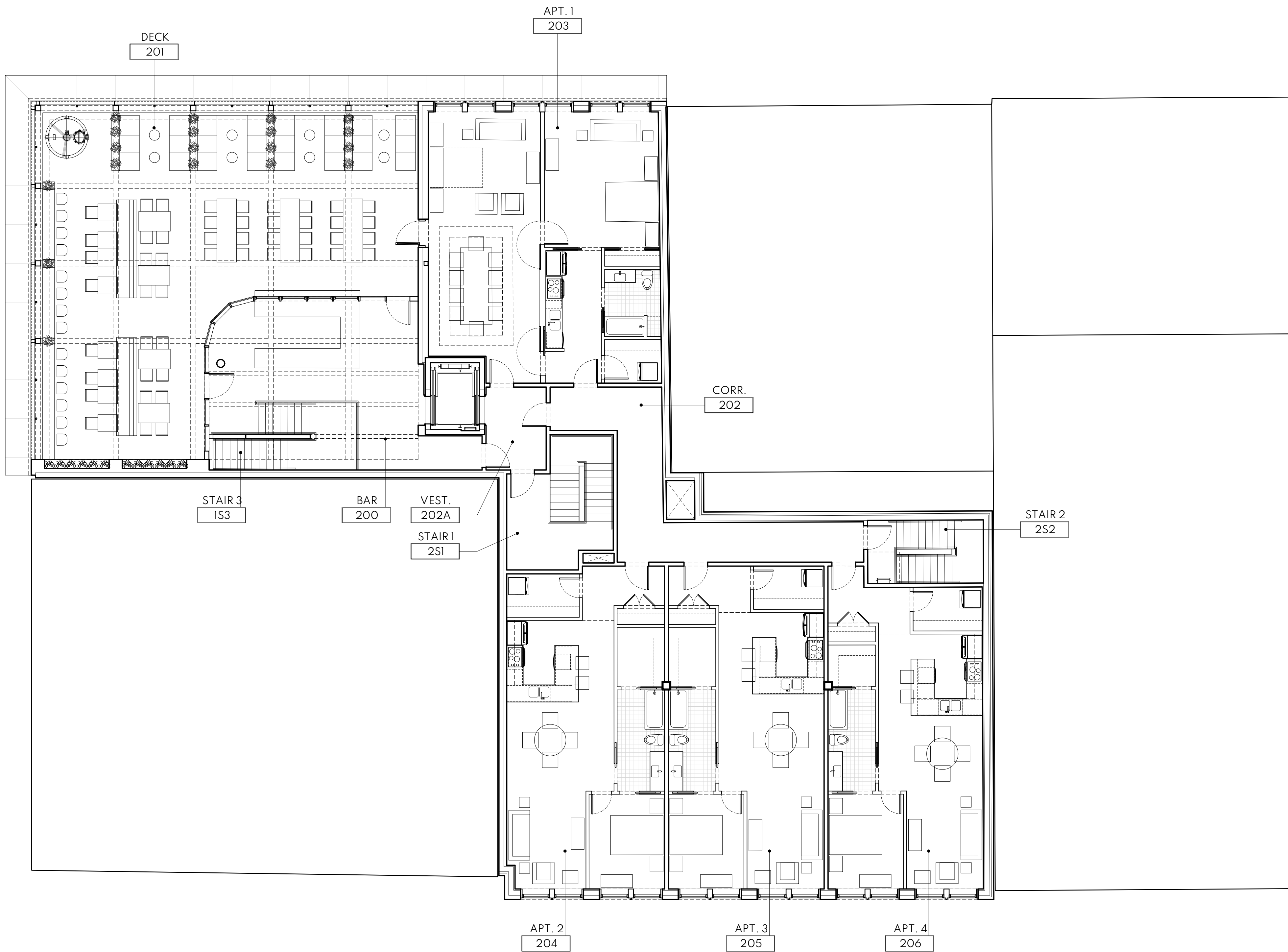
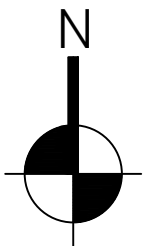
Washington Square Project

PROJECT NUMBER: 22-01

SECOND FLOOR PLAN

SHEET

A1.04

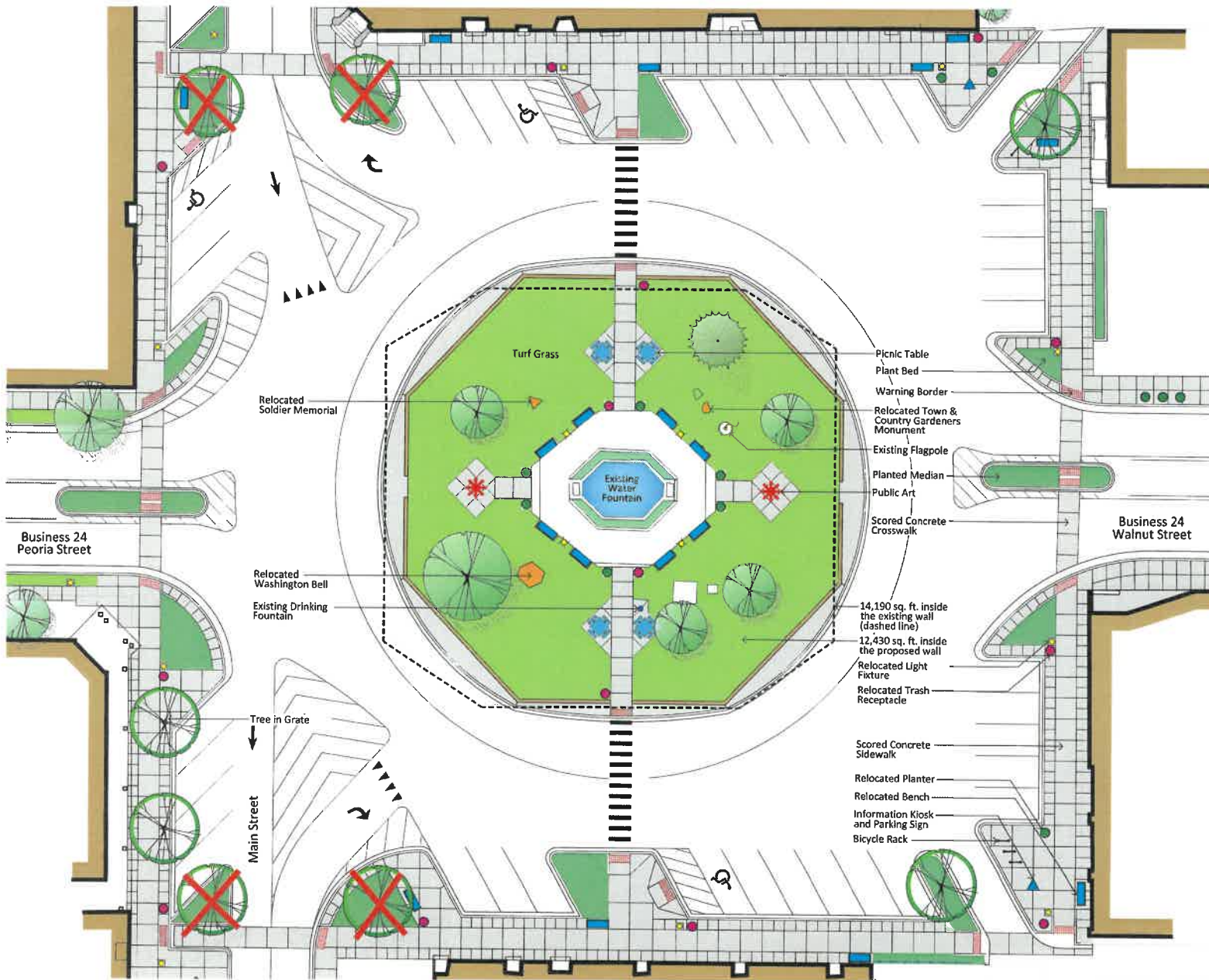


Washington's Downtown Square

Concept Plan A
September 13, 2019

Legend

-  Scored Concrete Sidewalk
-  Ornamental Fence
-  Bench (relocated)
-  Planter (relocated)
-  Trash Receptacle (relocated)
-  Bicycle Rack (new)
-  Picnic Tables (new)
-  Information Kiosk / Parking Sign
-  Light Fixture (relocated/new)
-  Existing Flagpole
-  Existing Drinking Fountain
-  Soldier Memorial - Cannon Balls (relocated)
-  Washington Bell (relocated)
-  Town & Country Gardeners Monument (relocated)
-  Public Art (by Others)
-  Existing Deciduous Tree
-  Existing Evergreen Tree
-  New Deciduous Tree
-  Plant Bed
-  Turf Grass



Hutchison
Engineering, Inc.

MasleMasle+Associates
Civil/Structural/Transportation Engineers

Graphic Scale
0' 5' 10' 20' 25' N

ORIGINAL SQUARE STREETSCAPING



SQUARE STREETSCAPING - TWO PARKING SPOTS REMOVED

