



CITY OF WASHINGTON, ILLINOIS

City Council Agenda Communication

Meeting Date: May 5, 2025

Prepared By: Dennis Carr - City Engineer

Agenda Item: Bid Award – 2025 MFT Contract # 25-00000-00-GM

Explanation: The larger project was broken into 4 smaller projects to increase the competitiveness for the different sections. The bids were opened the morning of the May 1, 2025.

This year's project will do some type of improvement on the roads around Calvin and Brown, the roads between Muller and Wilmor, roads north of Santa Fe Road and the roads north of the bypass that are west of Cummings.

Spray Patch Section –

There were 3 bidders. The low bid for this section of the project was Ace in the Hole for a total price of \$66,648.00. The Engineer's Estimate for this section was \$105,800.00

Seal Coat Section –

There was 1 bidder. The low bid for this section of the project was RA Cullinan for a total price of \$469,255.50. The Engineer's Estimate for this section was \$483,930.00

Fog Coat Section –

There was 1 bidder. The low bid for this section of the project was RA Cullinan for a total price of \$130,651.65. The Engineer's Estimate for this section was \$135,490.60

Hot In-Place Recycling Section –

There was 1 bidder. The low bid for this section of the project was American Asphalt Surface Recycling for a total price of \$236,746.32. The Engineer's Estimate for this section was \$237,936.00

Fiscal Impact: We budgeted to spend \$1,000,000 from MFT funds. The total for all 4 sections of the project comes to \$903,301.47 which is around \$60,000 less than the engineers estimate.

Recommendation/

Committee Discussion Summary: Staff recommends project award to the low bidders.

Action Requested: Approval of award.

					American Asphalt Surface Recycle, Inc.		D&D Pavement Solutions, Inc.		Ace in the Hole, nc.		Midstate Asphalt Repair, Inc.		United Contractors Midwest	
			ENGINEERS ESTIMATE		CONTRACTOR 1		CONTRACTOR 2		CONTRACTOR 3		CONTRACTOR 4		CONTRACTOR 5	
PAY ITEM	UNIT	QUANTITY	UNIT PRICE	TOTAL	UNIT PRICE	TOTAL	UNIT PRICE	TOTAL	UNIT PRICE	TOTAL	UNIT PRICE	TOTAL	UNIT PRICE	TOTAL
SPRAY PATCHING SECTION														
BIT MTRL SPRAY PATCH	GAL	7600	\$13.00	\$98,800.00			\$8.04	\$61,104.00	\$7.98	\$60,648.00	\$10.75	\$81,700.00		
SPRAY PATCH AGG	TON	200	\$35.00	\$7,000.00			\$32.00	\$6,400.00	\$30.00	\$6,000.00	\$32.00	\$6,400.00		
Totals				\$105,800.00										
SEAL COAT SECTION														
BIT MTRL SC (CRSP)	GAL	48390	\$7.00	\$338,730.00									\$6.72	\$325,180.80
SC AGG-BLK TRP RK (3/8" DIA)	TON	1210	\$120.00	\$145,200.00									\$119.07	\$144,074.70
Totals				\$483,930.00										
FOG COAT SECTION														
FOG COAT	SQ YD	96779	\$1.40	\$135,490.60									\$1.35	\$130,651.65
Totals				\$135,490.60										
HIR SECTION														
HOT IN-POLACE RECYCLING	SQ YD	39656	\$6.00	\$237,936.00	5.97	\$236,746.32								
Totals				\$237,936.00		\$236,746.32		\$67,504.00		\$66,648.00		\$88,100.00		\$599,907.15

Engr. Total \$963,156.60

Low Bid Total \$903,301.47



Street Maintenance Map

CALVIN AND BROWN

Legend

- Chip Seal 2025
- - - Chip Seal - HIR 2025
- City Boundary



Date: 2/18/2025

This map indicates approximate data locations and may not be 100% accurate.



Street Maintenance Map

MULLER AND VALLEY FORGE

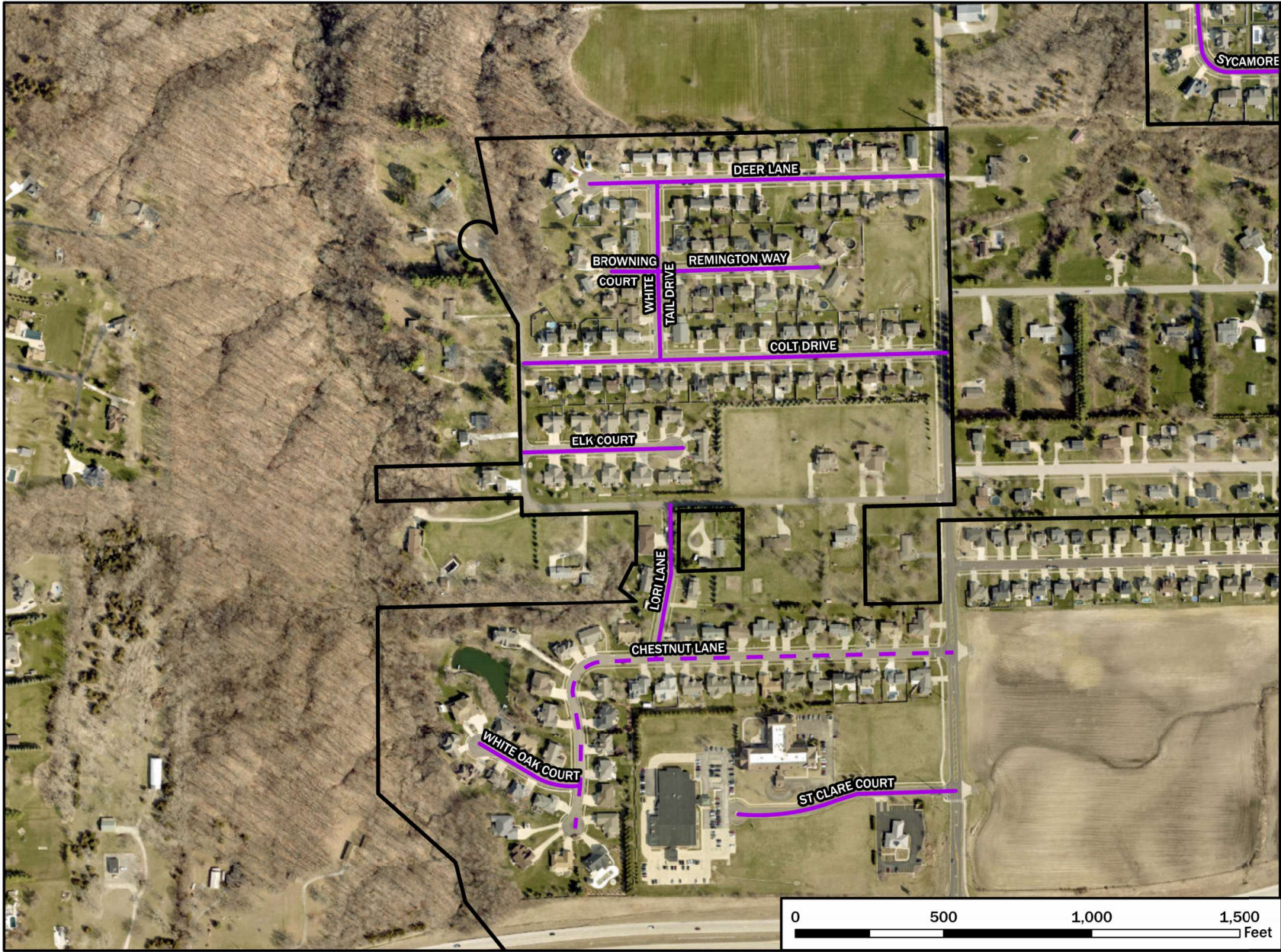
Legend

- Chip Seal 2025
- - - Chip Seal - HIR 2025
- City Boundary



Date: 2/18/2025

This map indicates approximate data locations and may not be 100% accurate.



Street Maintenance Map

WEST OF CUMMINGS

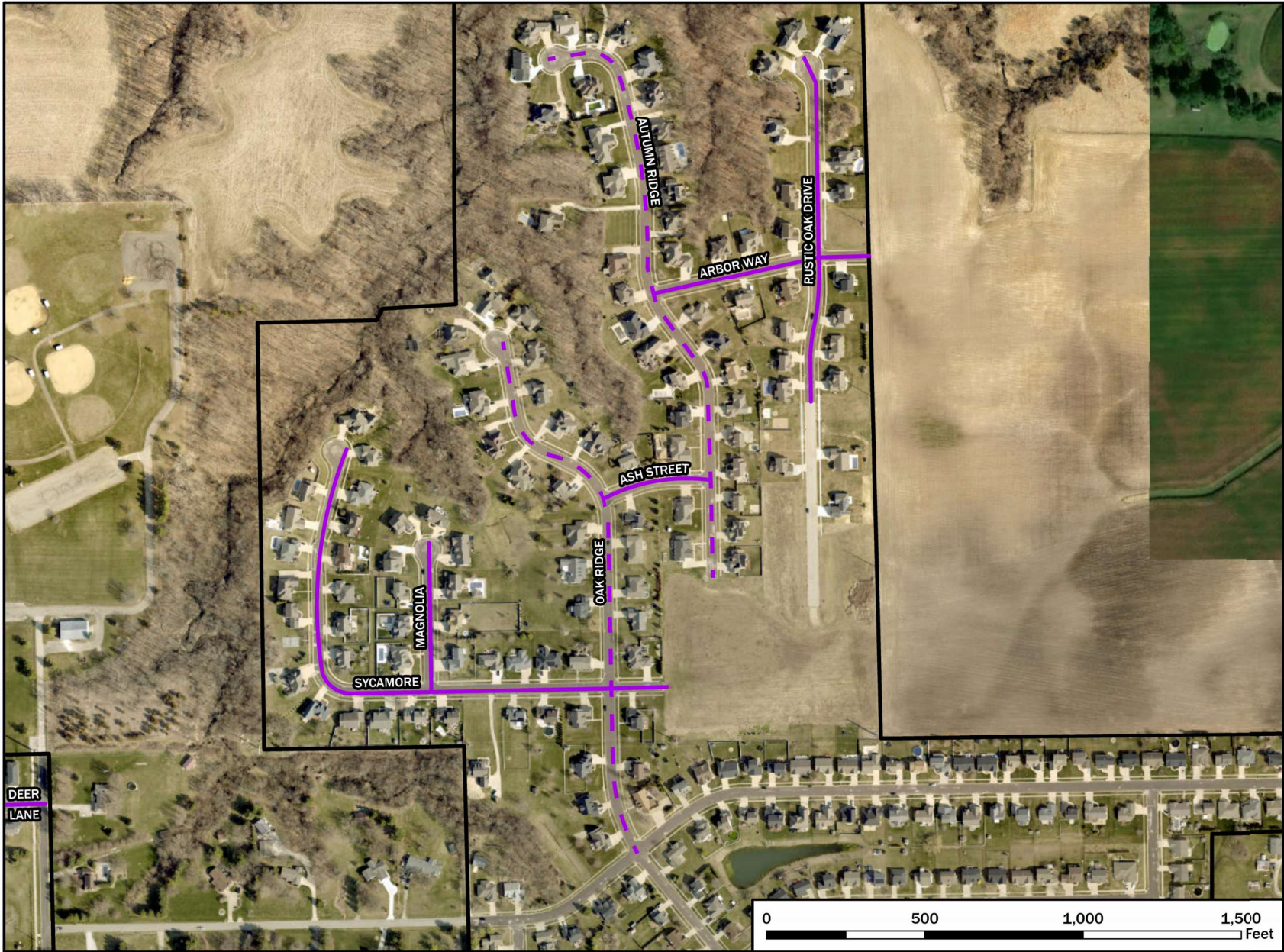
Legend

- Chip Seal 2025
- Chip Seal - HIR 2025
- City Boundary



Date: 1/27/2025



This map indicates approximate data locations and may not be 100% accurate.



Street Maintenance Map

NORTH OF SANTA FE

Legend

-  Chip Seal 2025
-  Chip Seal - HIR 2025
-  City Boundary



Date: 1/27/2025

This map indicates approximate data locations and may not be 100% accurate.



Street Maintenance Map

MULLER AND VALLEY FORGE

Legend

- Chip Seal 2025
- Chip Seal - HIR 2025
- City Boundary



Date: 1/27/2025

This map indicates approximate data locations and may not be 100% accurate.

