



CITY OF WASHINGTON, ILLINOIS

Committee of the Whole Agenda Communication

Meeting Date: June 9, 2025

Prepared By: Jon Oliphant, AICP, Planning & Development Director

Agenda Item: Square Parking Discussion Follow-up

Explanation: More visitors have come to the Square as anticipated upon the recent opening of Tangled Roots Craft Beer & Kitchen. This has made it slightly more challenging to find public parking spaces within as close proximity to businesses as desired. This is a good problem to have and is representative of a downtown that has growth. Staff has seen a reduction in parking-related comments and questions over the past month, which seems indicative of greater comfort with the parking allocation.

The most recent on- and off-street parking restrictions were approved by the City Council in 2002. Staff feels that given the length of time since the prior City Code amendment, it may be worthwhile to explore any changes. The current parking restrictions are as follows:

- One parking space on the west side of the Square immediately north of the crosswalk on N. Main Street has a 15-minute maximum limit between 5 pm and 10 pm.
- The following eight parking spaces have a 30-minute maximum parking limit between 9 am and 10 pm:
 - The four most westerly spaces on the south side of the Square;
 - The two most southerly spaces on the west side, north of Peoria;
 - The most northerly parking space on the west side, south of Peoria; and
 - The one most southerly space on the east side of the Square, south of Walnut Street.
- **Restricted Parking Area I:** With the exception of the parking spaces noted above, the following spaces have a four-hour consecutive maximum time limit other than Sundays and holidays:
 - North side of Square;
 - South side of Square;
 - East side of Square;
 - West side of S. Main from Peoria continuing through the west side of the Square to Burton Street;
 - West side of N. Main from Peoria to Jefferson Street; and
 - Peoria from N. Main to Herbst Lane.
- **Restricted Parking Area II:** The following off-street parking lots prohibit the parking for more than 48 consecutive hours:
 - 104 Zinser Place;
 - Parking lot north of Peddlers Way;
 - Parking lot north of Essig Law Office;
 - 105 N. High Street; and
 - The parking spaces abutting the east side of the Lindy's Downtown Market building.
- **Restricted Parking Area III:** The parking spaces abutting the east side of the Lindy's building also carry a two-hour consecutive maximum time limit from Monday through Saturday between 9 am and 9 pm.

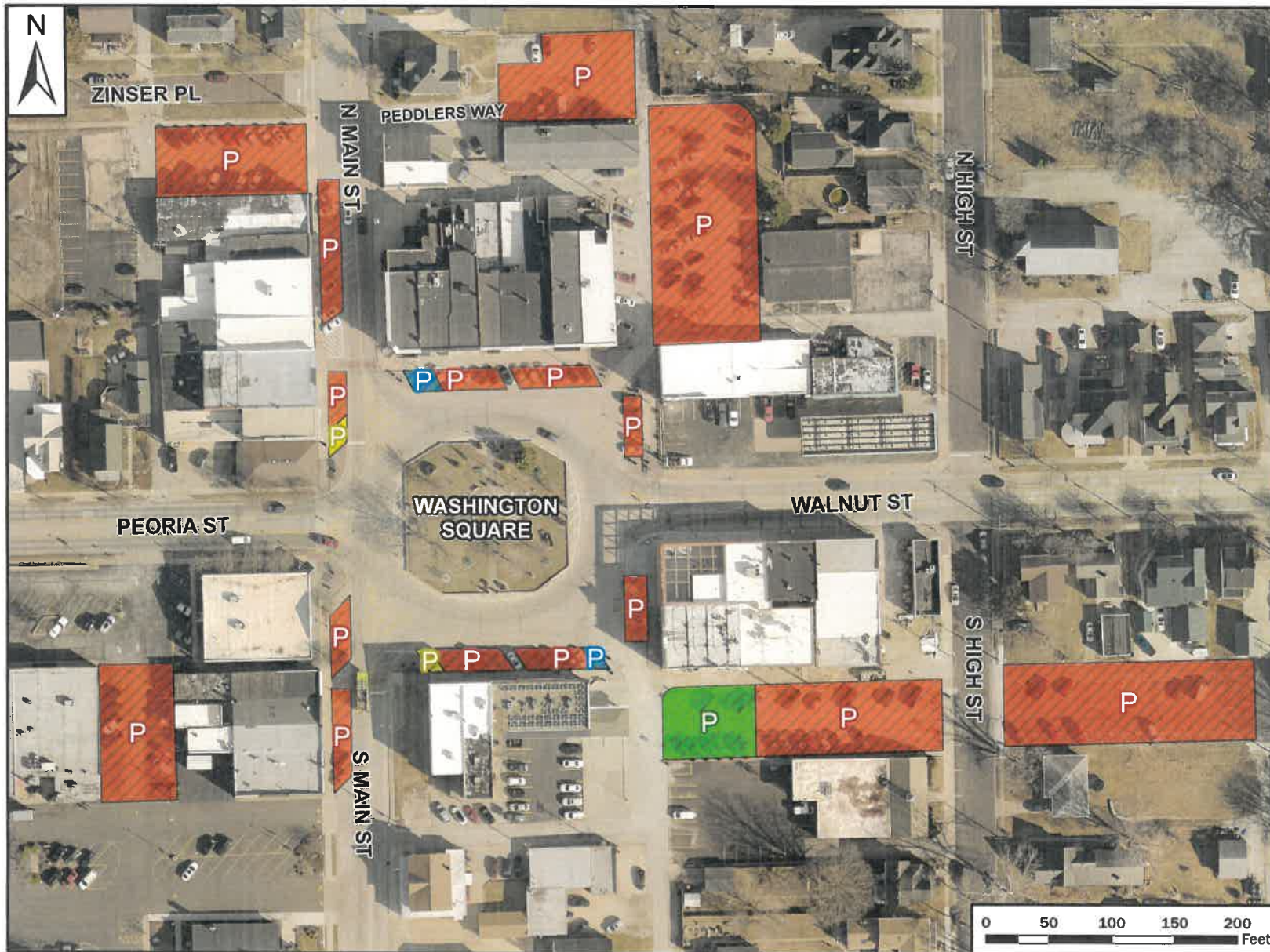
Staff has discussed potential changes to the City's parking regulations with several of the Square business owners. There has been some interest in reallocating the temporary parking. Staff understands the desire for short-term spaces to allow for food/beverage carryout orders or to make short stops into a business. However, this needs to be balanced with what the perception of allocating too many temporary spaces can mean for visitors to the Square that would likely be parked for longer periods of time. Additionally, the enforcement of timed parking can be challenging. The following changes, which were mentioned at the May Committee of the Whole meeting, have been discussed by the Washington Specialty Shops and are jointly recommended for consideration by that group and staff:

- Eliminate the 104 Zinser and 105 N. High lots from Restricted Parking Area II, as neither of these lots are owned or leased by the City. As a result, the privately-owned lots should not have any restrictions as those owned or leased by the City.
- Add the City-owned lots at 104 S. High and 105 S. High to the Restricted Parking Area II lots.
- Eliminate the Parking Area I restrictions that allow for four-hour parking on Peoria from N. Main to Herbst Lane. Parking is prohibited on Business Route 24 and the current regulations conflict with that.
- Establish the following as 15-minute maximum spaces:
 - Two spaces in front of Faire Coffee on the far west side of the north side. It may be beneficial to indicate that the hours would coincide with the current 6:30 am to 2 pm Monday through Saturday hours to allow for the space to be utilized during other times when the business is closed. The business owner has asked for one of those signs to mention the business name and phone number to allow for a vehicle to call the number and expedite the carry-out process. Such signs currently exists there; and
 - One space in front of Ipava State Bank on the far east side of the south side.
- Establish the following as 30-minute maximum spaces:
 - One space in front of The Bent Penny on the far west side of the south side; and
 - One space in front of Maloof Realty/former Foster Jewelry on the west side of N. Main.

Maps are attached showing the recommended and current parking restrictions.

Fiscal Impact: There would be little City expense for adopting the following regulations other than the placement of any necessary signage.

Action Requested: Staff provides this as update on the possible future consideration of the implementation of the aforementioned regulations at the June 9 Committee of the Whole meeting. Following that discussion, a future code amendment ordinance may be brought to the Council for adoption.



Proposed Parking Map

Historic
Washington Square

Legend

- 15 min. Parking
- 30 min. Parking
- City Owned Parking
- Leased Parking

**It is unlawful to park a vehicle for more than 15 minutes in any consecutive period of time between 5:00 p.m. and 10:00 p.m.*

**It is unlawful to park a vehicle for more than 30 minutes in any consecutive period of time between 9:00 a.m. and 10:00 p.m.*



Date: 5/14/2025

This map indicates approximate data locations and may not be 100% accurate. Parcels are provided and maintained by Tazewell County.



Proposed Parking Map

Parking Area I

Legend

 Restricted Area I

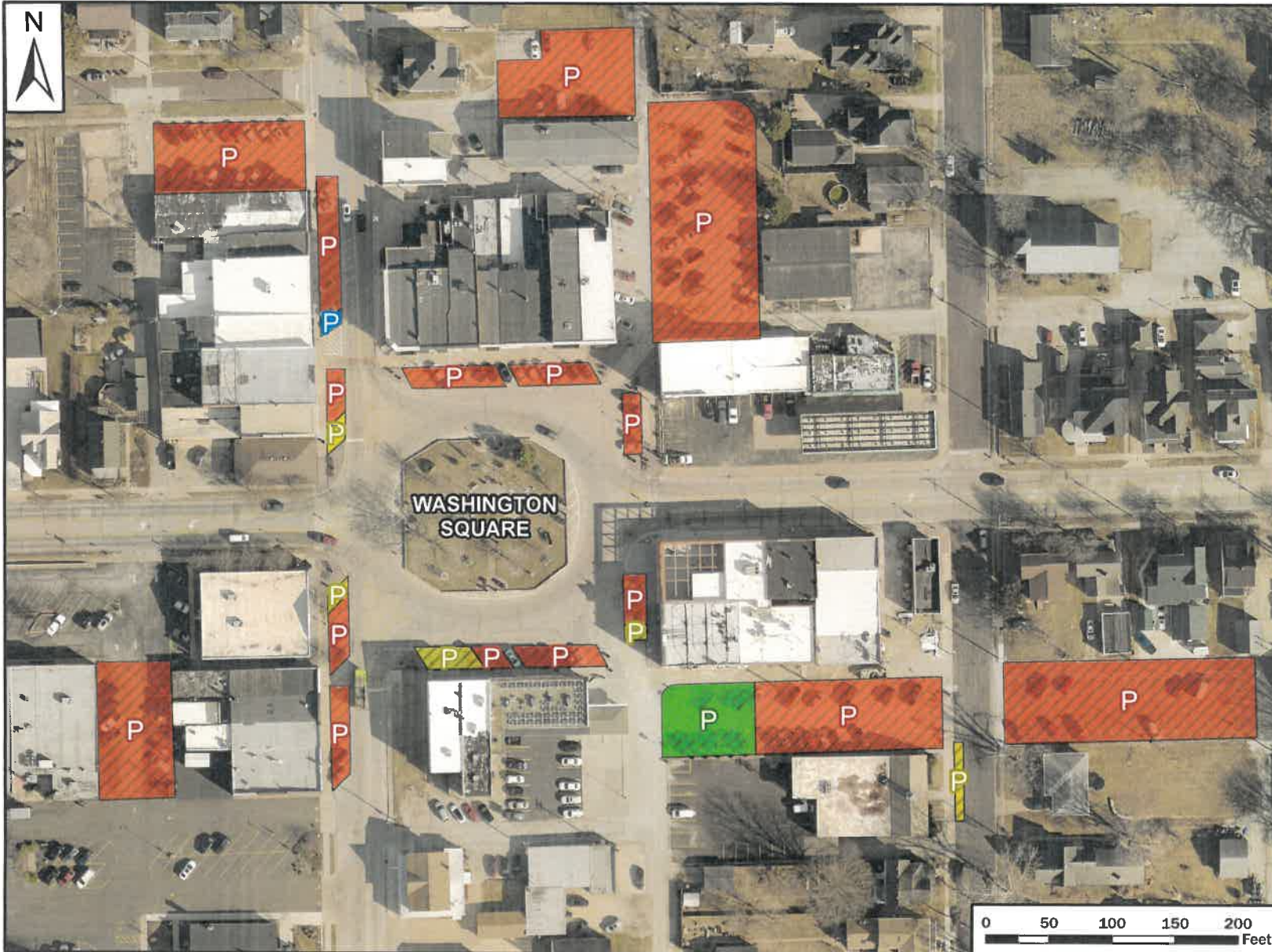
Except on Sundays and holidays, it is unlawful to park any vehicle for more than four hours in any consecutive period of time, between 9:00 a.m. and 9:00 p.m. in any area designated in this section as Restricted Parking Area I.



Date: 6/3/2025

This map indicates approximate data locations and may not be 100% accurate. Parcels are provided and maintained by Tazewell County.





Current Parking Restrictions Map

Historic
Washington Square

Legend

- City Owned Parking
- Leased Parking
- 15 Min. Parking
- 30 Min. Parking

*It is unlawful to park a vehicle for more than 15 minutes in any consecutive period of time between 5:00 p.m. and 10:00 p.m.

*It is unlawful to park a vehicle for more than 30 minutes in any consecutive period of time between 9:00 a.m. and 10:00 p.m.



Date: 5/9/2025

This map indicates approximate data locations and may not be 100% accurate. Parcels are provided and maintained by Tazewell County.



Parking Restrictions Map

Parking Area I

Legend

 Restricted Area I

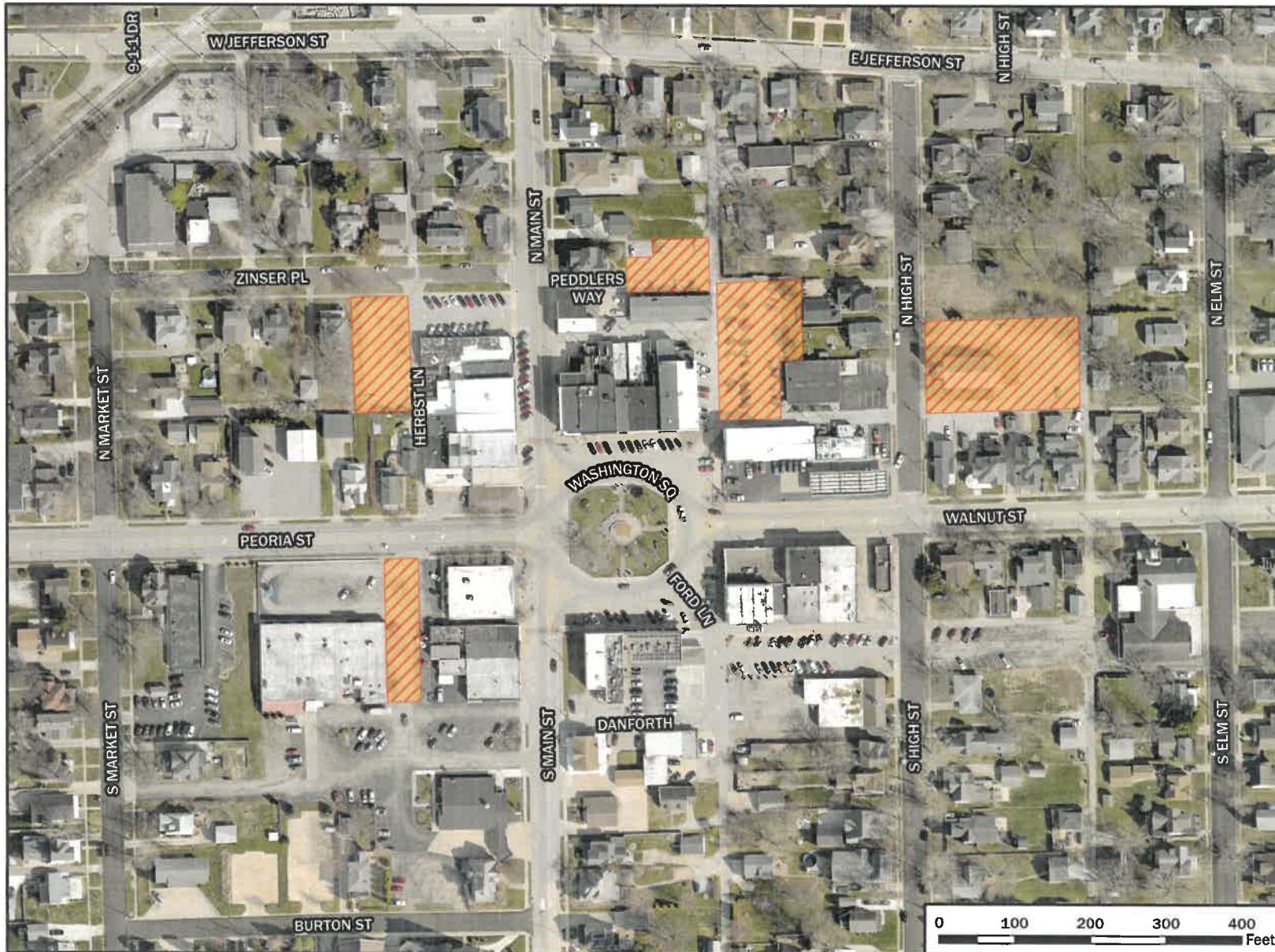
Except on Sundays and holidays, it is unlawful to park any vehicle for more than four hours in any consecutive period of time, between 9:00 a.m. and 9:00 p.m. in any area designated in this section as Restricted Parking Area I.



Date: 4/11/2025

This map indicates approximate data locations and may not be 100% accurate. Parcels are provided and maintained by Tazewell County.

0 100 200 300 400 Feet



Parking Restrictions Map

Parking Area II

Legend

 Restricted Area II

It is unlawful to park any vehicle for more than 48 consecutive hours in any area designated as Restricted Parking Area II; provided, however, that parking shall be permitted by the police chief or designees in four spaces marked for such purposes.



Date: 4/14/2025

This map indicates approximate data locations and may not be 100% accurate. Parcels are provided and maintained by Tazewell County.



Parking Restrictions Map

Parking Area III

Legend

 Restricted Area III

It is unlawful to park any vehicle for more than two hours in any consecutive period from Monday through Saturday between the hours of 9:00 a.m. and 9:00 p.m. in any area designated as Restricted Parking Area III.



Date: 4/14/2025

This map indicates approximate data locations and may not be 100% accurate. Parcels are provided and maintained by Tazewell County.

0 50 100 150 200 Feet