

# WASHINGTON POLICE DEPARTMENT

## June 2025 - Monthly Report

	25	24	+/-	Description/Notes
Part I Offenses	48	51	3	Part I Crimes are classified as follows: Murder, Criminal Sex Assault; Robbery, Aggravated Battery; Aggravated Assault, Burglary, Theft, Motor Vehicle Theft, Arson
Part II Offenses	233	145	88	Part II Crimes are all other crimes such as Damage to Property, Thefts Under \$500.00, Disorderly Conduct, etc.
Traffic Citations (Tickets)	45	86	41	These are tickets where the violator either has to pay the ticket or go to court for adjudication,
Written Warnings	83	136	53	These are documented warnings to the violator. No fine court appearance is required.
Driving While Revoked or Suspended	9	3	6	These are custodial arrest situations where the offender must go to court for adjudication.
Driving Under Influence of Alcohol	4	1	3	These are custodial arrest situations where the offender must go to court for adjudication.
Drug Offenses	7	1	6	These are custodial arrest situations where the offender must go to court for adjudication.
Chapter 101-Vehicle Seizures	16	6	10	These are situations where a motor vehicle has been used on one of the enumerated offenses in Chapter 101 of the Code of Ordinances.
PD Accidents	16	17	1	Property Damage Accidents
PI Accidents	1	0	1	Personal Injury Accidents
M.D.R.S. Reviews/Coaching	12/1	17/4	5/3	Random Review of Officer's Video from Squads
Positive Community Contacts	85	71	14	Lock-Outs, Open Doors, Motorist Assists, Non-Traffic Officer Initiated Contacts, Citizen Assists, Escorts, Car Seat Inspections, Fingerprinting, Found Property, House Checks, etc.
Other Officer Initiated Activity	260	300	40	Calls for Service that do not fit into noted categories, but do not necessarily rise to level of a report being taken. Walk-ins, Suspicious Persons/Autos, Loud Noise, Verbal Warning Traffic /Pedestrian Stops, events that officers on patrol find that need to be addressed, etc.
Total Calls	1115	1037	78	
Agency Assists	29	25	4	Agency Assists occur outside of our jurisdiction and are not included in Part II Offenses or any other of the other categories. <i>These statistics are not included in above totals.</i>

# WASHINGTON POLICE DEPARTMENT

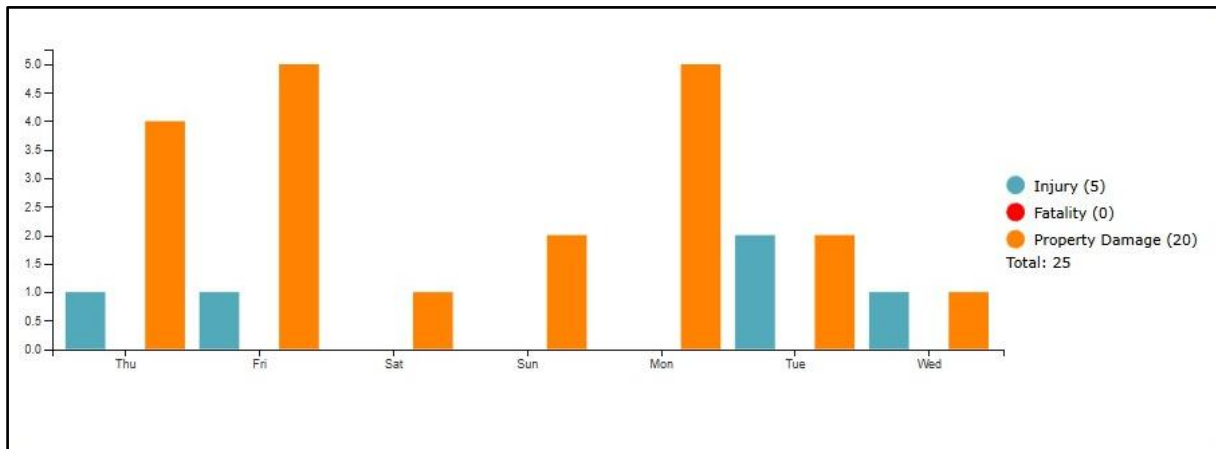
## June 2025 - Year-to-Date Report

	25	24	+/-	Description/Notes
Part I Offenses	220	254	34	Part I Crimes are classified as follows: Murder, Criminal Sex Assault; Robbery, Aggravated Battery; Aggravated Assault, Burglary, Theft, Motor Vehicle Theft, Arson
Part II Offenses	784	937	153	Part II Crimes are all other crimes such as Damage to Property, Thefts Under \$500.00, Disorderly Conduct, etc.
Traffic Citations (Tickets)	431	410	21	These are tickets where the violator either has to pay the ticket or go to court for adjudication,
Written Warnings	744	686	58	These are documented warnings to the violator. No fine court appearance is required.
Driving While Revoked or Suspended	44	27	17	These are custodial arrest situations where the offender must go to court for adjudication.
Driving Under Influence of Alcohol	30	9	21	These are custodial arrest situations where the offender must go to court for adjudication.
Drug Offenses	30	17	13	These are custodial arrest situations where the offender must go to court for adjudication.
Chapter 101-Vehicle Seizures	129	39	90	These are situations where a motor vehicle has been used on one of the enumerated offenses in Chapter 101 of the Code of Ordinances.
PD Accidents	210	136	74	Property Damage Accidents
PI Accidents	35	15	20	Personal Injury Accidents
M.D.R.S. Reviews/Coaching	109/52	72/17	37/35	Random Review of Officer's Video from Squads
Positive Community Contacts	508	438	70	Lock-Outs, Open Doors, Motorist Assists, Non-Traffic Officer Initiated Contacts, Citizen Assists, Escorts, Car Seat Inspections, Fingerprinting, Found Property, House Checks, etc.
Other Officer Initiated Activity	1894	2020	126	Calls for Service that do not fit into noted categories, but do not necessarily rise to level of a report being taken. Walk-ins, Suspicious Persons/Autos, Loud Noise, Verbal Warning Traffic /Pedestrian Stops, events that officers on patrol find that need to be addressed, etc.
Total Calls	5574	5466	108	
Agency Assists	146	164	18	Agency Assists occur outside of our jurisdiction and are not included in Part II Offenses or any other of the other categories. <i>These statistics are not included in above totals.</i>

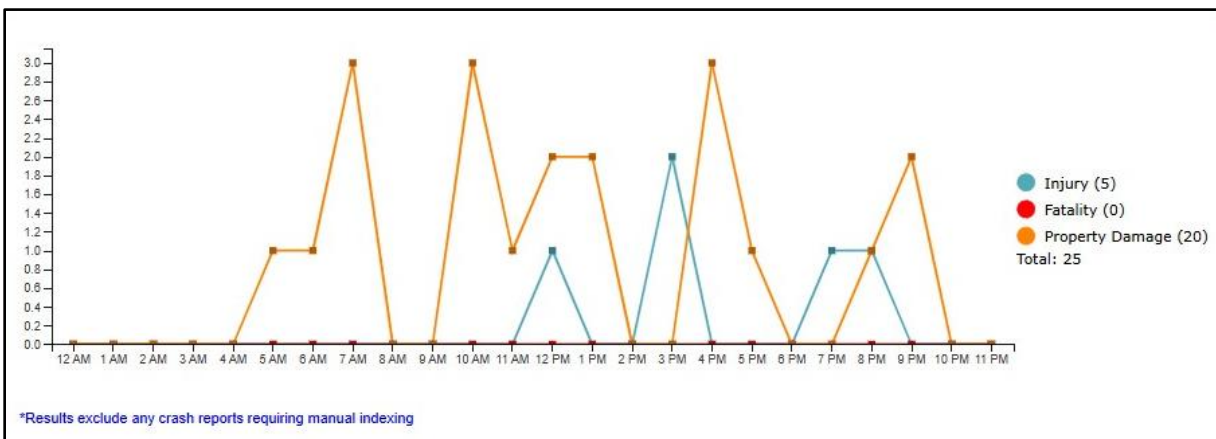
# WASHINGTON POLICE DEPARTMENT

## June 2025 Traffic Crash Data

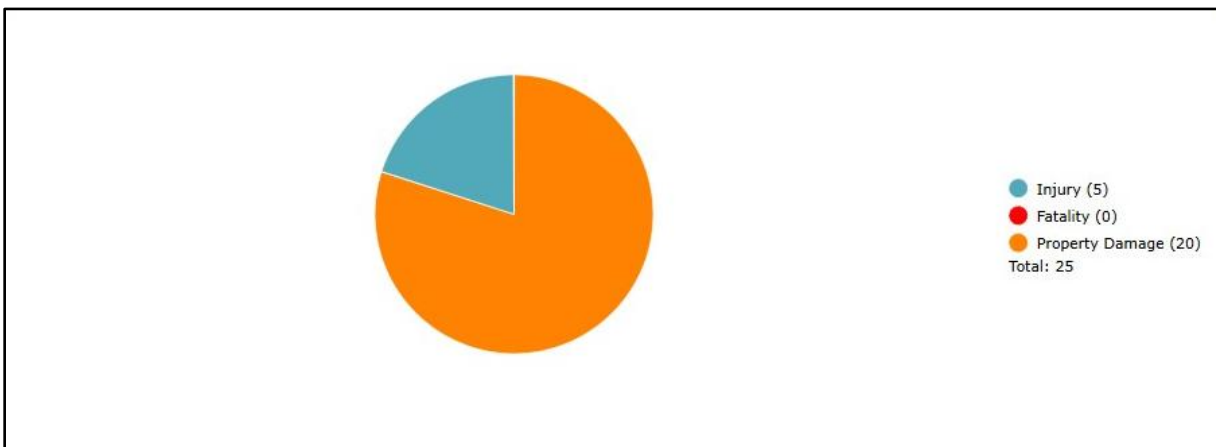
### Crash Data – Day of the Week



### Crash Data – Time of Day



### Crash Data – Injury



**WASHINGTON POLICE DEPARTMENT****June 2025 - Monthly Motorcycle Report**

	25	24	+/-	Description/Notes
1st Shift Hours	8	5	3	Hours the motorcycles were out on first shift
2nd Shift Hours	4	8	4	Hours the motorcycles were out on second shift
Traffic Citations (Tickets)	0	5	5	These are tickets where the violator either has to pay the ticket or go to court for adjudication.
Written Warnings	4	9	5	These are documented warnings to the violator. No fine court appearance is required.
Cell Phone Violations	0	2	2	These are situations where the vehicle operator was using a handheld mobile device while driving a vehicle.
Moving Violations	4	12	8	These are situations where a motor vehicle was in motion when the driver commits a traffic violation.
Equipment Violations	0	0	0	These are situations where a motor vehicle was in violation with equipment; no tail light, broken headlight, no seat belt, cracked windshield, etc.
Traffic Stops	4	14	10	These are total traffic stops.
Positive Community Contacts	250	15	235	Lock-Outs, Open Doors, Motorist Assists, Non-Traffic Officer Initiated Contacts, Citizen Assists, Escorts, Car Seat Inspections, Fingerprinting, Found Property, House Checks, etc.
Total Hours	12	22	10	Exceptionally hot month in June of 2025

Primary functions: Patrol while assigned a district, law enforcement and funeral escort, traffic enforcement and community motor escorts.

## INVESTIGATIONS MONTHLY REPORT: FEBRUARY 2025

### OVERVIEW FOR JUNE 2025

The Investigation Division received 9 cases for June 2025. This number represents the number of cases the Investigation Division investigated; not the number of incidents received by the WPD.

### TYPES OF CASES FOR JUNE 2025

Burglary	3	Retail Theft	1	Theft	2
Financial Crime	2	Sex Offense	1		

February 2025 CASES

