



CITY OF WASHINGTON, ILLINOIS

City Council Agenda Communication

Meeting Dates: July 7, 2025 (First Reading)
July 21, 2025 (Second Reading)

Prepared By: Jon Oliphant, AICP, Planning & Development Director

Agenda Item: First and Second Reading Ordinances – Square Parking Code Amendment

Explanation: More visitors have come to the Square as anticipated upon the recent opening of Tangled Roots Craft Beer & Kitchen. This has made it slightly more challenging to find public parking spaces within as close proximity to businesses as desired. This is a good problem to have and is representative of a downtown that has growth. Staff has seen a reduction in parking-related comments and questions over the past month, which seems indicative of greater comfort with the parking allocation.

The most recent on- and off-street parking restrictions were approved by the City Council in 2002. Staff feels that given the length of time since the prior City Code amendment, it may be worthwhile to explore any changes. The current parking restrictions are as follows:

- One parking space on the west side of the Square immediately north of the crosswalk on N. Main Street has a 15-minute maximum limit between 5 pm and 10 pm.
- The following eight parking spaces have a 30-minute maximum parking limit between 9 am and 10 pm:
 - The four most westerly spaces on the south side of the Square;
 - The two most southerly spaces on the west side, north of Peoria;
 - The most northerly parking space on the west side, south of Peoria; and
 - The one most southerly space on the east side of the Square, south of Walnut Street.
- **Restricted Parking Area I:** With the exception of the parking spaces noted above, the following spaces have a four-hour consecutive maximum time limit other than Sundays and holidays:
 - North side of Square;
 - South side of Square;
 - East side of Square;
 - West side of S. Main from Peoria continuing through the west side of the Square to Burton Street;
 - West side of N. Main from Peoria to Jefferson Street; and
 - Peoria from N. Main to Herbst Lane.
- **Restricted Parking Area II:** The following off-street parking lots prohibit the parking for more than 48 consecutive hours:
 - 104 Zinser Place;
 - Parking lot north of Peddlers Way;
 - Parking lot north of Essig Law Office;
 - 105 N. High Street; and
 - The parking spaces abutting the east side of the Lindy's Downtown Market building.

- **Restricted Parking Area III:** The parking spaces abutting the east side of the Lindy's building also carry a two-hour consecutive maximum time limit from Monday through Saturday between 9 am and 9 pm.

Staff has discussed potential changes to the City's parking regulations with several of the Square business owners. There has been some interest in reallocating the temporary parking. Staff understands the desire for short-term spaces to allow for food/beverage carryout orders or to make short stops into a business. However, this needs to be balanced with what the perception of allocating too many temporary spaces can mean for visitors to the Square that would likely be parked for longer periods of time. Additionally, the enforcement of timed parking can be challenging. The following changes have been discussed by the Washington Specialty Shops and are jointly recommended for consideration by that group and staff as part of the attached code amendment:

- Eliminate the 104 Zinser and 105 N. High lots from Restricted Parking Area II, as neither of these lots are owned or leased by the City. As a result, the privately-owned lots should not have any restrictions as those owned or leased by the City.
- Add the City-owned lots at 104 S. High and 105 S. High to the Restricted Parking Area II lots.
- Eliminate the Parking Area I restrictions that allow for four-hour parking on Peoria from N. Main to Herbst Lane. Parking is prohibited on Business Route 24 and the current regulations conflict with that.
- Reduce the Parking Area I restrictions on the west side of N. Main from between Jefferson and Peoria to instead be between Zinser and Peoria. The section of N. Main between Jefferson and Zinser contains more residential uses and staff feels it should not have the same parking restriction as those properties closer to the Square. **Please note that this was not previously discussed with the Council but staff urges its inclusion in the amendment.**
- Establish the following as 15-minute maximum spaces:
 - Two spaces in front of Faire Coffee on the far west side of the north side. The hours would coincide with the current 6:30 am to 2 pm Monday through Saturday hours to allow for the spaces to be utilized during other times when the business is closed. The business owner has asked for one of those signs to mention the business name and phone number to allow for a vehicle to call the number and expedite the carry-out process. Such signs currently exist there; and
 - One space in front of Ipava State Bank on the far east side of the south side.
- Establish the following as 30-minute maximum spaces:
 - One space in front of The Bent Penny on the far west side of the south side; and
 - One space in front of Maloof Realty/former Foster Jewelry on the west side of N. Main.

Maps are attached showing the recommended and current parking restrictions.

Fiscal Impact: There would be little City expense for adopting the following regulations other than the placement of any necessary signage.

Action Requested: Approval of the attached amendment ordinance. This was previously discussed with the Council at the May and June Committee of the Whole meetings and there was consensus to move ahead with the drafting of this. A first reading ordinance is scheduled for the July 7 Council meeting and a second reading will be scheduled for the July 21 meeting.

ORDINANCE NO. _____

(Synopsis: Adoption of this ordinance would amend the Restricted Parking Area I and II standards that regulate the allocation and time restrictions for public on- and off-street parking near the Square.)

**AN ORDINANCE AMENDING THE CODE OF ORDINANCES OF
THE CITY OF WASHINGTON, ILLINOIS BY AMENDING VARIOUS SECTIONS OF
SECTION 52 ENTITLED "TRAFFIC AND VEHICLES"**

**BE IT ORDAINED BY THE CITY COUNCIL OF THE CITY OF WASHINGTON,
TAZEWELL COUNTY, ILLINOIS, as follows:**

Section 1. That Section 52-83 of Chapter 52 of the Washington Municipal Code of Ordinances titled "Restricted Parking Area I specifications" is hereby amended by deleting Section 52-83 in its entirety and by substituting the following as Section 52-83 in lieu thereof:

"Sec. 52-83 – Restricted Parking Area I specifications

(a) The following are designated as Restricted Parking Area I:

- (1) North side of city ~~square~~ Square.
- (2) South side of city ~~square~~ Square.
- (3) East side of city ~~square~~ Square.
- (4) West side of Main Street from ~~Washington~~ Peoria Street continuing through the west side of city ~~square~~ Square to Burton Street.
- (5) West side of North Main Street from ~~Washington~~ Peoria Street to ~~Jefferson Street~~ Zinser Place.
- ~~(6) Washington Street from North Main Street to the first alley west.~~

(b) Except on Sundays and holidays, it is unlawful to park any vehicle for more than four hours in in any consecutive period of time, between 9:00 a.m. and 9:00 p.m. in any area designated in this section as Restricted Parking Area I.

(c) It is unlawful to park a vehicle for more than 30 minutes in any consecutive period of time between 9:00 a.m. and 10:00 p.m. in the following parking spaces located in Restricted Parking Area I:

- (1) The ~~four~~ one most westerly parking spaces on the south side of the ~~square~~ Square.
- (2) The ~~two~~ one most southerly parking spaces on the west side of the ~~square~~ Square, north of Peoria Street (U.S. Business Route 24).
- ~~(3) The one most northerly parking space on the west side of the square, south of Peoria Street (Business Route 24).~~

~~(4) The one most southerly parking space of the east side of the square, south of Walnut Street (Business Route 24).~~

(d) It is unlawful to park a vehicle for more than 15 minutes in any consecutive period of time between ~~5:00 p.m. 9:00 a.m. and 10:00 p.m. 5:00 p.m.~~ in the one *most easterly* parking space on the west *south* side of the square ~~Square~~, immediately north of the crosswalk on North Main Street.

~~(e) Except on Sundays, it is unlawful to park a vehicle for more than 15 minutes in any consecutive period of time between 6:30 a.m. and 2:00 p.m. in the two most westerly parking spaces on the north side of the Square."~~

Section 2. That Section 52-84 of Chapter 52 of the Washington Municipal Code of Ordinances titled "Restricted Parking Area II specifications" is hereby amended by deleting Section 52-84 in its entirety and by substituting the following as Section 52-84 in lieu thereof:

"Sec. 52-84. – Restricted Parking Area II specifications

(a) The following are designated as Restricted Parking Area II:

(1) The west 100 feet of even width of Lots 35, 36 and 37 except the west 20 feet of the east 140 feet of Lot 35 and the west 20 feet of the east 140 feet of the south 15 feet of Lot 36, all in the original town, now, the City of Washington, Illinois.

(2) The east ½ of Lot 4 in Yager's Addition to the city.

~~(3) All of Lot 4 and the east ½ of Lot 5 in Block 3 of Dorsey's Addition to the city.~~

~~(3) Lot 26 in the Original Town, except for the west 75 feet by the south 53 feet of Lot 26, commonly referred to as 104 S. High Street.~~

~~(4) Lots 47 and 48 in the Original Town, now, the City of Washington, situated in Tazewell County, Illinois (located off of North High Street in the 100 block, on the East side of North High Street).~~

~~(4) Lot 57 in the Original Town, commonly referred to as 105 S. High Street.~~

(5) Part of Lots 4 and 5 of the Original Town of Washington, Tazewell County, Illinois (located off of North Main Street in the 100 block thereof, lying between North Main Street on the West and a public alley on the East).

(b) It is unlawful to park any vehicle for more than 48 consecutive hours in any area designated as Restricted Parking Area II; provided, however, that parking shall be permitted by the police chief or designees in four spaces marked for such purposes."

Section 3. That this ordinance shall be in full force and effect from and after its passage, approval, and publication as provided by law.

Section 4. That all ordinances or parts thereof in conflict herewith are hereby expressly repealed.

PASSED AND APPROVED this _____ day of _____, 2025.

AYES: _____

NAYS: _____

Mayor

ATTEST:

City Clerk



Proposed Parking Map

Historic
Washington Square

Legend

- 15 min. Parking (North)
- 15 min. Parking (South)
- 30 Min. Parking
- City Owned Parking
- Leased Parking

*It is unlawful to park a vehicle for more than 15 minutes in any consecutive period of time between 6:30 a.m. and 2:00 p.m. in the two most westerly parking spaces on the north side.

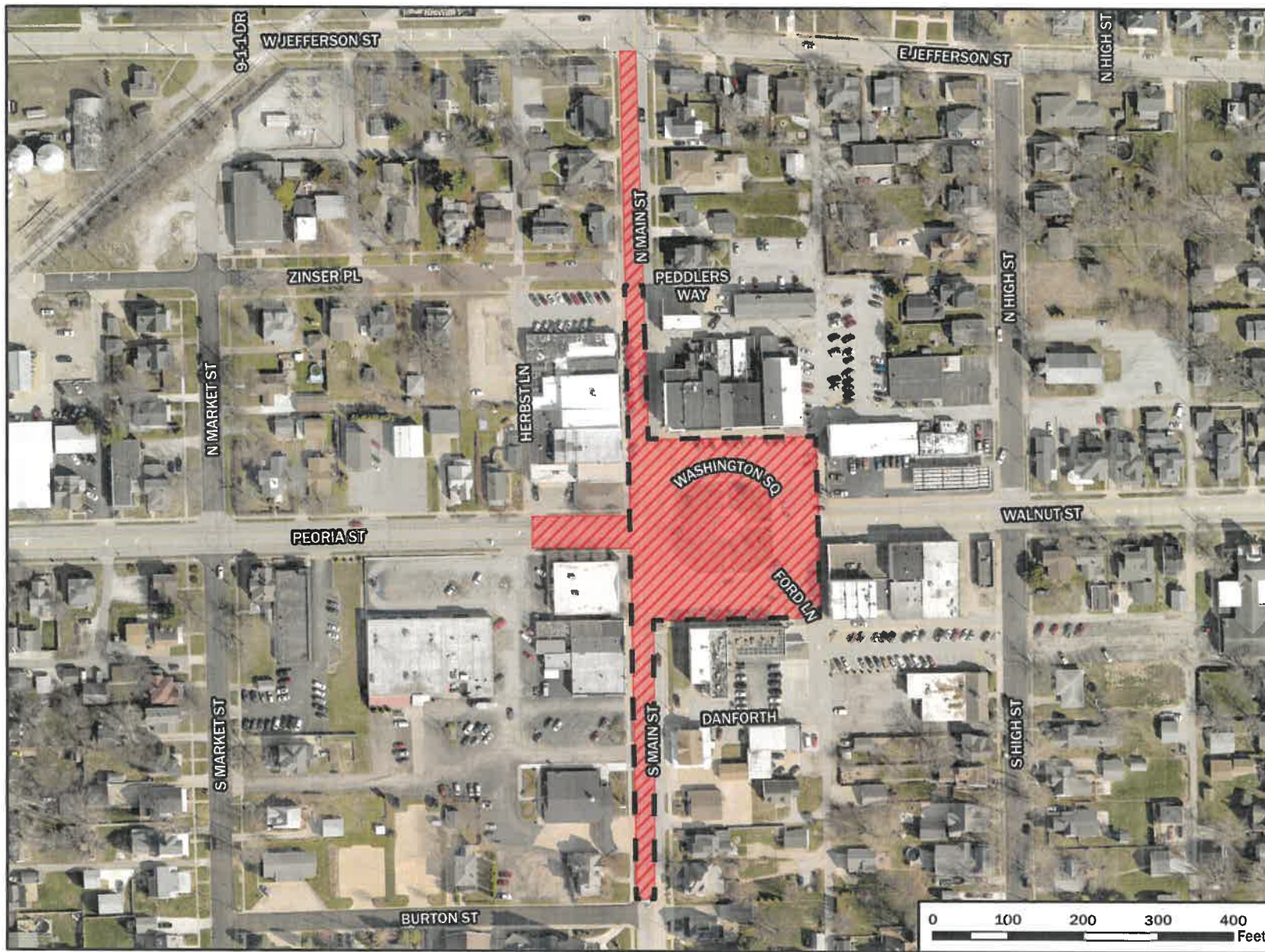
*It is unlawful to park a vehicle for more than 15 minutes in any consecutive period of time between 9:00 a.m. and 5:00 p.m. in the one most easterly parking space on the south side.

*It is unlawful to park a vehicle for more than 30 minutes in any consecutive period of time between 9:00 a.m. and 10:00 p.m.



Date: 7/3/2025



This map indicates approximate data locations and may not be 100% accurate. Parcels are provided and maintained by Tazewell County.



Proposed Parking Restrictions Map

Parking Area I

Legend

-  Restricted Area I
-  Proposed Restricted Area I

Except on Sundays and holidays, it is unlawful to park any vehicle for more than four hours in any consecutive period of time, between 9:00 a.m. and 9:00 p.m. in any area designated in this section as Restricted Parking Area I.



Date: 5/13/2025

This map indicates approximate data locations and may not be 100% accurate. Parcels are provided and maintained by Tazewell County.



Current Parking Restrictions Map

Historic
Washington Square

Legend

- City Owned Parking
- Leased Parking
- 15 Min. Parking
- 30 Min. Parking

**It is unlawful to park a vehicle for more than 15 minutes in any consecutive period of time between 5:00 p.m. and 10:00 p.m.*

**It is unlawful to park a vehicle for more than 30 minutes in any consecutive period of time between 9:00 a.m. and 10:00 p.m.*



Date: 5/9/2025

This map indicates approximate data locations and may not be 100% accurate. Parcels are provided and maintained by Tazewell County.



Parking Restrictions Map

Parking Area I

Legend

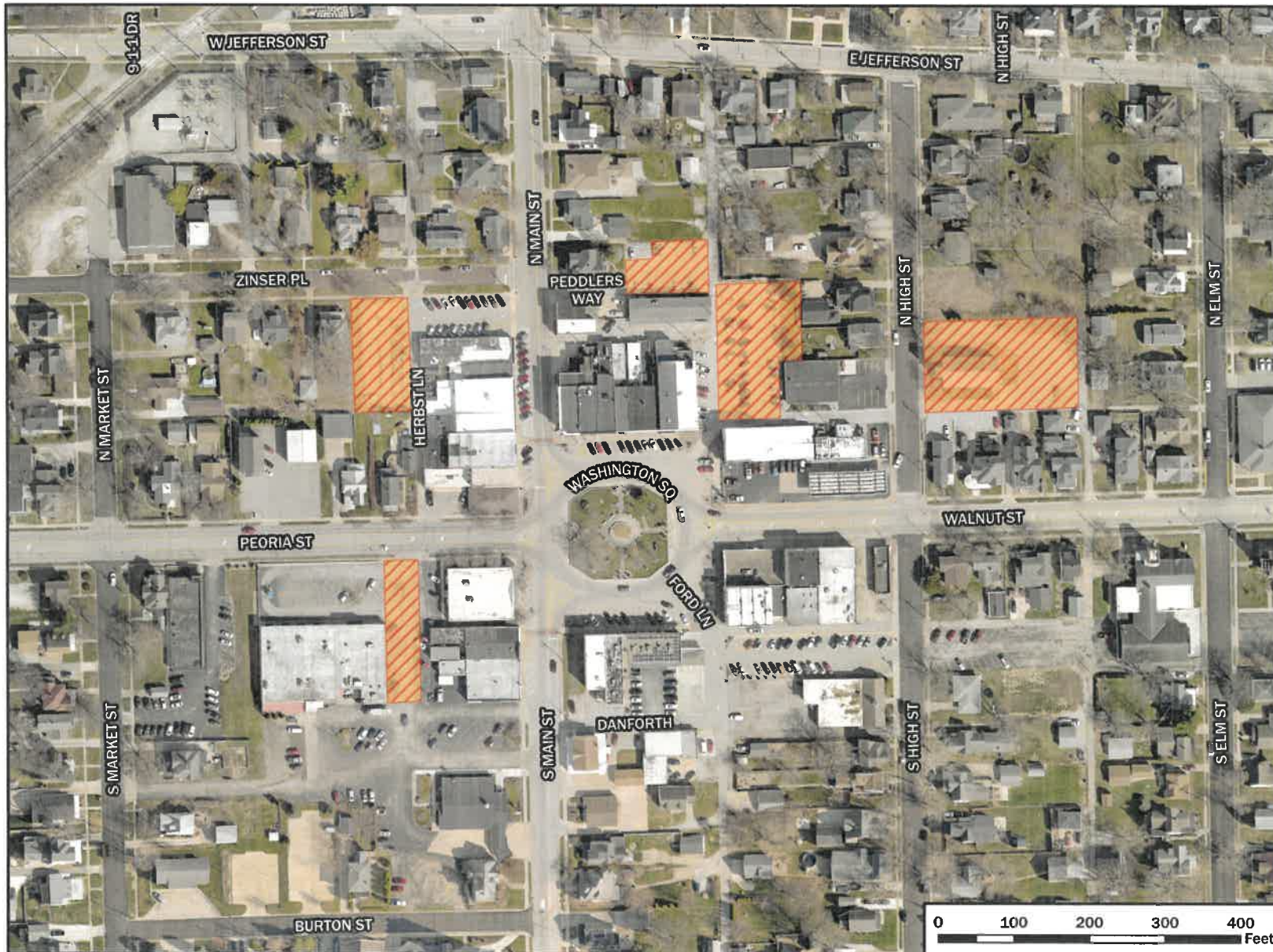
 Restricted Area I

Except on Sundays and holidays, it is unlawful to park any vehicle for more than four hours in any consecutive period of time, between 9:00 a.m. and 9:00 p.m. in any area designated in this section as Restricted Parking Area I.



Date: 4/11/2025

This map indicates approximate data locations and may not be 100% accurate. Parcels are provided and maintained by Tazewell County.



Parking Restrictions Map

Parking Area II

Legend

 Restricted Area II

It is unlawful to park any vehicle for more than 48 consecutive hours in any area designated as Restricted Parking Area II; provided, however, that parking shall be permitted by the police chief or designees in four spaces marked for such purposes.



Date: 4/14/2025

This map indicates approximate data locations and may not be 100% accurate. Parcels are provided and maintained by Tazewell County.



Parking Restrictions Map

Parking Area III

Legend

 Restricted Area III

It is unlawful to park any vehicle for more than two hours in any consecutive period from Monday through Saturday between the hours of 9:00 a.m. and 9:00 p.m. in any area designated as Restricted Parking Area III.



Date: 4/14/2025

This map indicates approximate data locations and may not be 100% accurate. Parcels are provided and maintained by Tazewell County.

0 50 100 150 200 Feet