



CITY OF WASHINGTON, ILLINOIS

Committee of the Whole Agenda Communication

Meeting Date: September 8, 2025

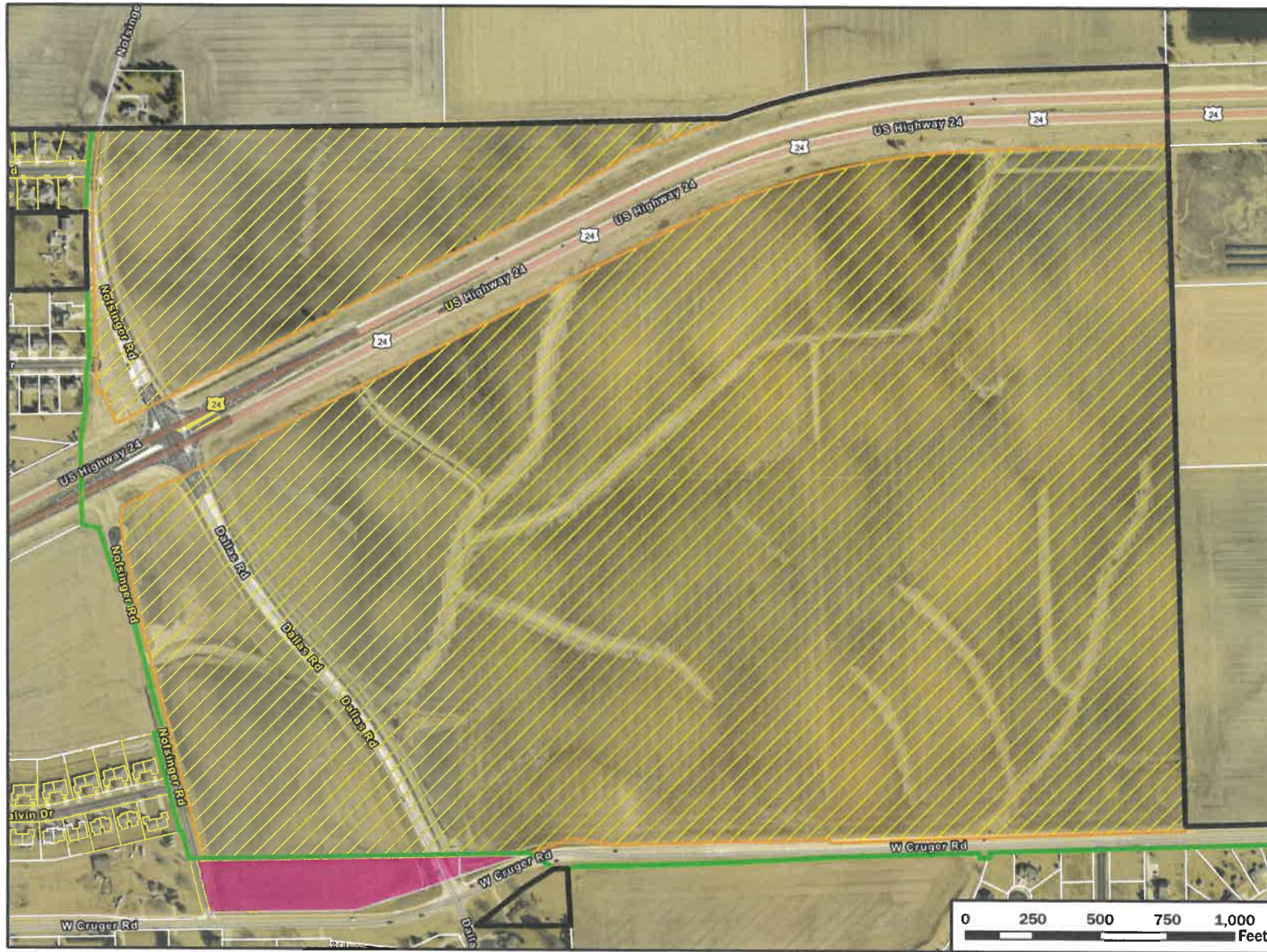
Prepared By: Jon Oliphant, AICP, Planning & Development Director

Agenda Item: Washington Park District Annexation of Portion of 223 Property

Explanation: Washington Park District staff via its attorney recently reached out to City staff about potentially adding the 223 property to its boundaries. The City annexed this property in November 2013 shortly after it was purchased. Four parcels encompass the entirety of the property. Two of these parcels, both located adjacent to W. Cruger Road, are currently in the Park District's boundaries and total 3.83 acres. However, the bulk of the property is not in the Park District's boundaries.

According to Section 3-10 of the Illinois Park District Code, no territory may be annexed more than one year after it has first been included in such municipality unless such territory so annexed is 120 acres or less. Because the remaining two parcels total approximately 219.19 acres (plus adjacent rights-of-way), the Park District cannot annex these parcels simply by passing an ordinance by its Board. A petition will need to be filed by the City as the property owner to request annexation by the Park District. If the Council is supportive of the annexation request, the Park District would prepare the pertinent annexation petition and ordinance.

Action Requested: Staff requests the consent to the Park District's annexation request of the remainder of the 223 property into its boundaries. This would allow the Park District to provide its services to the whole property at any point in the future. Direction is requested at the September 8 Committee of the Whole meeting.



Location Map

223 Property in relation to Park District Boundary

Legend

- City Boundary
- Park District Boundary
- Subject to Annexation
- 223 Property in Park District Boundary



Date: 9/4/2025

This map indicates approximate data locations and may not be 100% accurate. Parcels are provided and maintained by Tazewell County.