

Maurer Environmental  
3911 W. Cedar Hills Dr.  
Dunlap, IL. 61525  
August 30, 2022  
(309) 645-9820  
MES PROJECT# 169781



**IAQ/Mold Assessments**

**Water Loss Projects**

**Pre and Post Mold  
Remediation Testing**

**Asbestos Surveys**

**Lead Inspections**

**Bacteria Testing**

**Allergen Sampling**

**Pesticide Testing**

**Volatile Organic  
Compound Analysis**

**Water Quality Testing**

**Methamphetamine and  
Clandestine Drug Lab  
Assessments**

**Trauma/Crime Scene  
Investigations**

**Expert Testimony**

## **Asbestos Evaluation - Limited Site Evaluation with Limited Sampling**



**Date:** August 30, 2022

**Prepared For:** City of Washington IL. (Client)

**Prepared By:** Maurer Environmental Services

**Project Address:** 305 Walnut St  
Washington, IL 61571

## **SECTION 1 - ASBESTOS BULK SAMPLING METHODOLOGY:**

Fifty-one (51) bulk samples of suspect asbestos containing materials were collected from the residential home located at the above mentioned address. The samples were then forwarded to a laboratory for analysis. The collected asbestos bulk samples were submitted under chain of custody for 24 hr turn around by PLM analysis to Inspector Lab in Ft Lauderdale Florida. Inspector Lab is NVLAP (#102053) accredited for bulk (PLM) asbestos analysis. The PLM method is the most commonly used method to analyze building materials for the presence of asbestos fibers. The PLM method is in accordance with the EPA Interim Method of the Determination of Asbestos in Bulk Samples (EPA, July 1993). This method utilizes the optical properties of minerals to identify the selected constituent. The use of this method enables identification of the type and the percentage of asbestos in a sample.

The detection limit of the PLM method for asbestos identification is approximately one percent (1%). MES recommends Transmission Electron Microscopy (TEM) or Point Counting analysis for asbestos samples with trace or less than one percent (<1%) when analyzed via PLM.

In some cases, samples collected from apparently homogeneous materials and yielding mixed results may, in fact, have been taken from different homogeneous materials displaying similar visual characteristics but composed of different constituents. Although materials may appear to be homogeneous, different manufacturers may have produced them in different batches. Materials, which appear to be homogeneous but yield mixed results, are typically assumed, in accordance with AHERA procedures, to be asbestos containing in all areas where the materials are located.



## SECTION 2 – PROJECT SCOPE:

The above-referenced property is a residential home located at 305 Walnut St in Washington Illinois. It was reported to the inspector the home is going to be demolished.. During any demolition, proposed improvement or restoration activities, suspect Asbestos Containing Building Material (ACBM) hidden behind wall cavities or other enclosures may be uncovered which may require further testing which is beyond the scope of this report.

The suspect asbestos-containing materials that were sampled are listed on the laboratory report section of the report along with the laboratory data. The highlighted data reveals the Asbestos identification results from their analysis.

## SECTION 3 – ACM IDENTIFICATION AND RECOMMENDATIONS:

The limit of Quantitation (LOQ) is 1%.

- The **Window Glazing** that were sampled and analyzed by the laboratory is defined by the EPA/600/M4/82-020 regulation as **Asbestos Containing Materials** as it tested above the 1% limit of quantitation.
- The **HVAC Boxes Through-out the House** that was sampled and analyzed by the laboratory is defined by the EPA/600/M4/82-020 regulation as an **Asbestos Containing Material** as it tested above the 1% limit of quantitation.
- The **HVAC Duct Paper-like Tape** that was sampled and analyzed by the laboratory is defined by the EPA/600/M4/82-020 regulation as an **Asbestos Containing Material** as it tested above the 1% limit of quantitation.
- The **2<sup>nd</sup> Layer of Flooring in Kitchen Addition** that was sampled and analyzed by the laboratory is defined by the EPA/600/M4/82-020 regulation as an **Asbestos Containing Material** as it tested above the 1% limit of quantitation.

### Recommendations:

Remove the materials under the Federal EPA Asbestos NESHAP regulation for building material removal. A State-licensed Asbestos Abatement Contractor is required for the removal and proper disposal of the materials. Additionally, all contractors are subject to the OSHA Asbestos standard requirements.



## **SECTION 4 - LIMITATIONS AND DISCLAIMERS:**

### **LIMITATIONS**

The field observations, measurements, and research reported herein are considered sufficient in detail and scope to determine the asbestos content of the tested materials at the subject property. The assessment, conclusions, and recommendations presented herein are based upon specifically limited data. They do not represent all conditions at the subject property as they reflect the information gathered for specific building systems. MES warrants the findings and conclusions contained herein have been promulgated in accordance with generally accepted industrial hygiene methodology and only for the site described in this report.

#### **4.1 Use by Third Parties**

This report was prepared pursuant to the contract MES has with the client. That contractual relationship included an exchange of information about the subject property that was unique and between MES and its client and serves as the basis upon which this report was prepared.

Reliance or use by any such third party without explicit authorization in the report does not make said third party a third party beneficiary to MES's contract with the client. Any such unauthorized reliance on or use of this report including any of its information or conclusion will be at third party's risk. For the same reasons, no warranties or representations, expressed or implied in this report, are made to any such third party.

#### **4.2 Unidentifiable Conditions**

This asbestos related environmental consulting report has been developed to provide the client with information regarding apparent conditions related to limited accessible building materials in the subject property. Although MES believes that the findings and conclusions provided in this report are reasonable, the assessment is limited to the conditions observed and to the information available from the client at the time of the work.


Maurer Environmental Services does not guarantee that all contaminated areas in the subject property were recognized during our evaluation. This report is limited only to the samples taken and locations sampled. Additional sampling may be needed to further identify other pollutants, or other affected areas inside the property. Maurer Environmental Services retains the right to supplement this report should additional information become available and/or further issues be discovered. Maurer



Environmental Services reserves the right to assess the potential impact of the new information on the findings and to revise the report, if necessary, as warranted by the information or discovery.

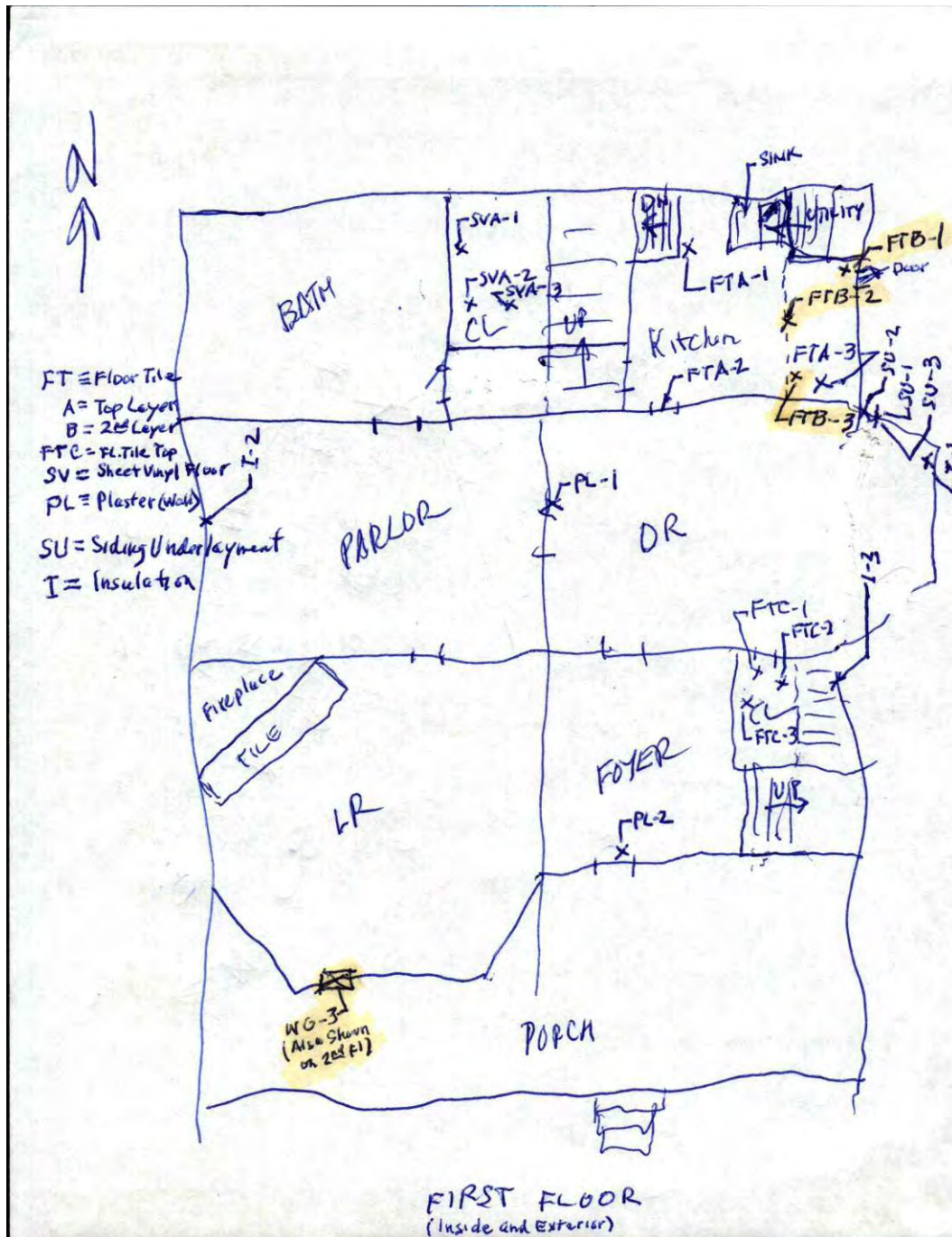
Thank you for choosing Maurer Environmental Services to provide professional consulting services. If for some reason you have any questions regarding this report, please do not hesitate to contact us.

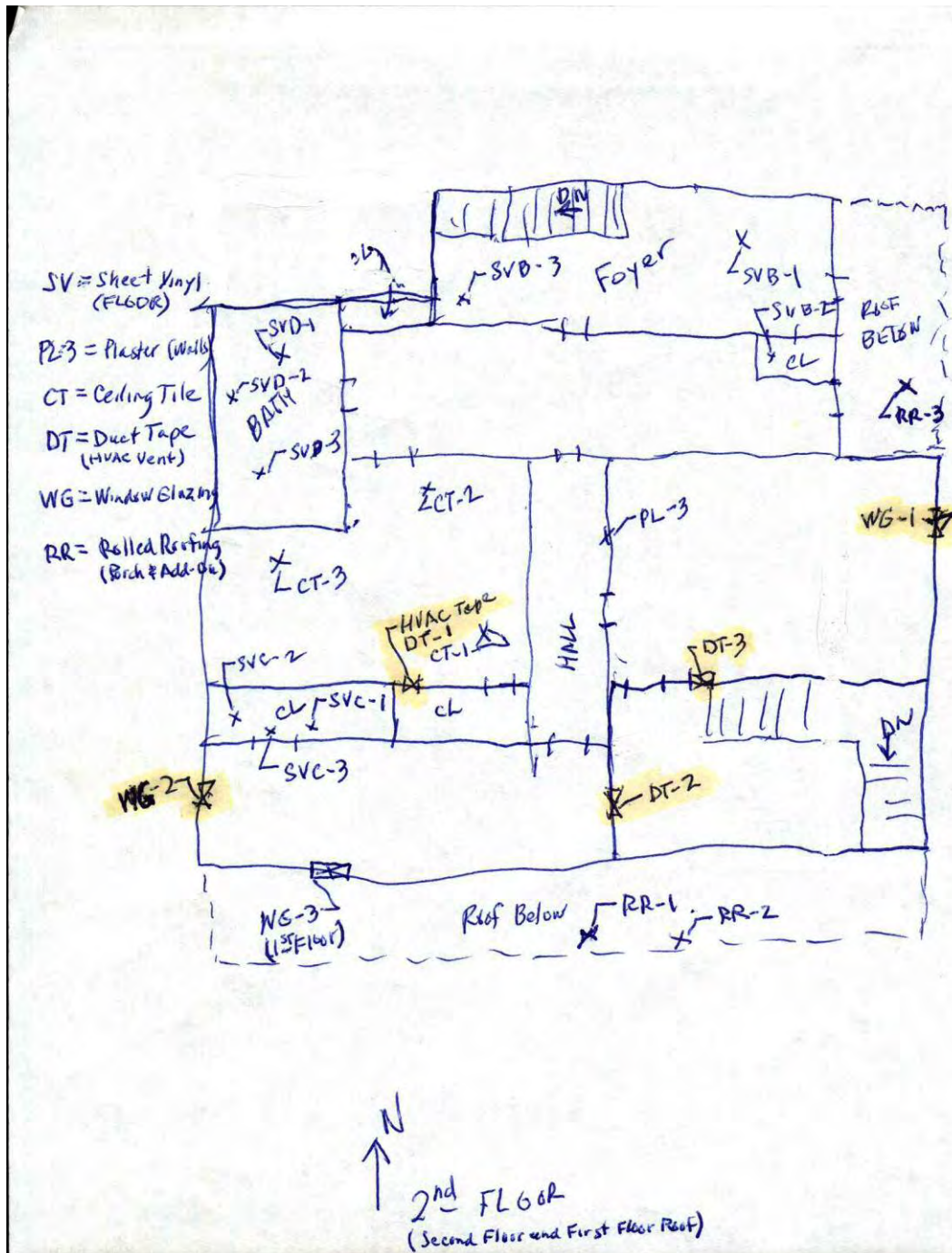
Respectively Submitted,

Scot Maurer   
**NAMRI** Certified Mold Inspector  
State of Illinois Licensed  
Asbestos Building Inspector  
#100-19504

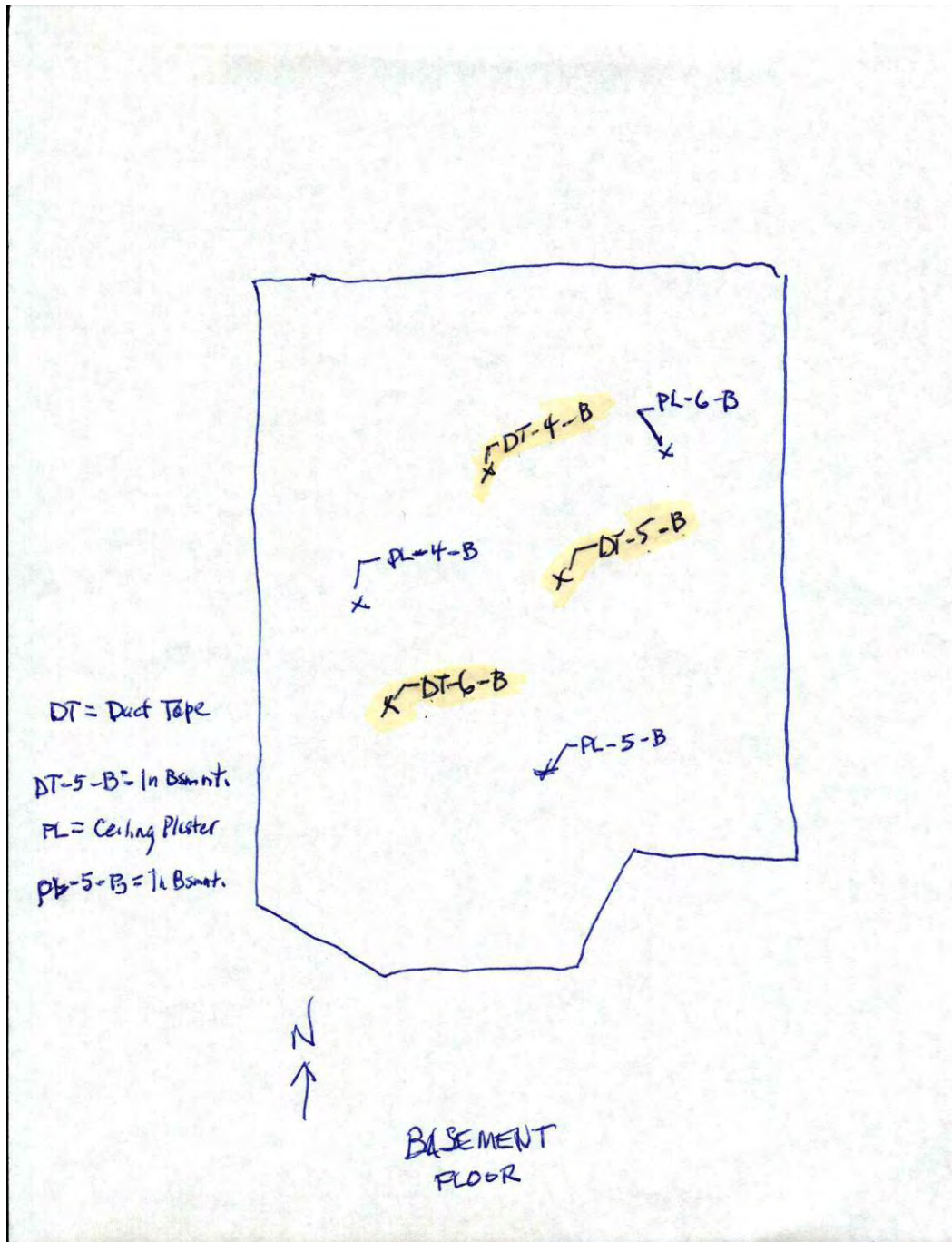














## Certificate of Asbestos Analysis

<b>Prepared for:</b>	Maurer Environmental 3911 Cedar Hills Dr. Dunlap, IL 61525	<b>Phone:</b>	(309) 645-9820
		<b>Email:</b>	scot@maurermold.com
<b>Test Address:</b>	305 Walnut Street Washington, IL 61571	<b>Lab COC #:</b>	52603424
<b>Date Collected:</b>	08/23/22	<b>Receive Date:</b>	08/25/22
<b>Analysis Date:</b>	08/30/22	<b>Report Date:</b>	08/30/22

<b>Client Sample:</b>	FT-A-1	<b>Collection Location:</b>	FLOOR TILE & MASTIC - TOP LAYER
<b>Sample Description:</b>	FLOOR TILE & MASTIC		
<b>No Asbestos Containing Material Detected</b>		<b>Friable/Homogeneous:</b>	NO/NO
		<b>Layers:</b>	2
	<b>Layer 1</b>	<b>Layer 2</b>	<b>Intentionally blank</b>
<b>Description:</b>	FLOOR TILE	MASTIC	
<b>Color:</b>	TAN	YELLOW	
<b>Asbestos Type</b>	None Detected	None Detected	
<b>Other Fibers</b>			
<b>Cellulose</b>	1%	1%	--
<b>Non-Fibers</b>			
<b>Minerals</b>	99%	99%	--

<b>Client Sample:</b>	FT-A-2	<b>Collection Location:</b>	FLOOR TILE & MASTIC - TOP LAYER
<b>Sample Description:</b>	FLOOR TILE & MASTIC		
<b>No Asbestos Containing Material Detected</b>		<b>Friable/Homogeneous:</b>	NO/NO
		<b>Layers:</b>	2
	<b>Layer 1</b>	<b>Layer 2</b>	<b>Intentionally blank</b>
<b>Description:</b>	FLOOR TILE	MASTIC	
<b>Color:</b>	TAN	YELLOW	
<b>Asbestos Type</b>	None Detected	None Detected	
<b>Other Fibers</b>			
<b>Cellulose</b>	1%	1%	--
<b>Non-Fibers</b>			
<b>Minerals</b>	99%	99%	--

<b>Client Sample:</b>	FT-A-3	<b>Collection Location:</b>	FLOOR TILE & MASTIC - TOP LAYER
<b>Sample Description:</b>	FLOOR TILE & MASTIC		
<b>No Asbestos Containing Material Detected</b>		<b>Friable/Homogeneous:</b>	NO/NO
		<b>Layers:</b>	2
	<b>Layer 1</b>	<b>Layer 2</b>	<b>Intentionally blank</b>
<b>Description:</b>	FLOOR TILE	MASTIC	
<b>Color:</b>	TAN	YELLOW	
<b>Asbestos Type</b>	None Detected	None Detected	
<b>Other Fibers</b>			
<b>Cellulose</b>	1%	1%	--
<b>Non-Fibers</b>			
<b>Minerals</b>	99%	99%	--

## Certificate of Asbestos Analysis

**Client Sample:** FT-B-1

**Collection Location:** FLOOR TILE & MASTIC - 2nd LAYER

**Sample Description:** FLOOR TILE

**Asbestos Containing Material Detected**

**Friable/Homogeneous:** NO/YES

**Layers:** 1

	Layer 1	Intentionally blank	Intentionally blank	Intentionally blank
<b>Description:</b>	FLOOR TILE			
<b>Color:</b>	GREEN			
<b>Asbestos Type</b>				
Chrysotile	25%	--	--	--
<b>Other Fibers</b>				
Cellulose	2%	--	--	--
<b>Non-Fibers</b>				
Minerals	73%	--	--	--

**Client Sample:** FT-B-2

**Collection Location:** FLOOR TILE & MASTIC - 2nd LAYER

**Sample Description:** FLOOR TILE

**STOP @ 1ST POSITIVE**

	Intentionally blank	Intentionally blank	Intentionally blank	Intentionally blank
<b>Description:</b>	--	--	--	--
<b>Color:</b>	--	--	--	--

**Client Sample:** FT-B-3

**Collection Location:** FLOOR TILE & MASTIC - 2nd LAYER

**Sample Description:** FLOOR TILE

**STOP @ 1ST POSITIVE**

	Intentionally blank	Intentionally blank	Intentionally blank	Intentionally blank
<b>Description:</b>	--	--	--	--
<b>Color:</b>	--	--	--	--

**Client Sample:** FT-C-1

**Collection Location:** FLOOR TILE & MASTIC - FOYER CLOSET

**Sample Description:** FLOOR TILE & MASTIC

**No Asbestos Containing Material Detected**

**Friable/Homogeneous:** NO/YES

**Layers:** 1

	Layer 1	Intentionally blank	Intentionally blank	Intentionally blank
<b>Description:</b>	FLOOR TILE			
<b>Color:</b>	BROWN / BLUE			
<b>Asbestos Type</b>	None Detected			
<b>Other Fibers</b>				
Cellulose	40%	--	--	--
<b>Non-Fibers</b>				
Minerals	60%	--	--	--

**Client Sample:** FT-C-2

**Collection Location:** FLOOR TILE & MASTIC - FOYER CLOSET

**Sample Description:** FLOOR TILE & MASTIC

**No Asbestos Containing Material Detected**

**Friable/Homogeneous:** NO/YES

**Layers:** 1

	Layer 1	Intentionally blank	Intentionally blank	Intentionally blank
<b>Description:</b>	FLOOR TILE			
<b>Color:</b>	BROWN / BLUE			
<b>Asbestos Type</b>	None Detected			
<b>Other Fibers</b>				
Cellulose	40%	--	--	--
<b>Non-Fibers</b>				
Minerals	60%	--	--	--

## Certificate of Asbestos Analysis

**Client Sample:** FT-C-3 **Collection Location:** FLOOR TILE & MASTIC - FOYER CLOSET

**Sample Description:** FLOOR TILE & MASTIC

**No Asbestos Containing Material Detected** **Friable/Homogeneous:** NO/YES **Layers:** 1

	Layer 1	Intentionally blank	Intentionally blank	Intentionally blank
Description:	FLOOR TILE			
Color:	BROWN / BLUE			
Asbestos Type	None Detected			
Other Fibers				
Cellulose	40%	--	--	--
Non-Fibers				
Minerals	60%	--	--	--

**Client Sample:** SU-1 **Collection Location:** EXTERIOR SIDING UNDERLAYMENT

**Sample Description:** EXTERIOR SIDING UNDERLAYMENT

**No Asbestos Containing Material Detected** **Friable/Homogeneous:** NO/YES **Layers:** 1

	Layer 1	Intentionally blank	Intentionally blank	Intentionally blank
Description:	EXTERIOR SIDING UN- DERLAYMENT			
Color:	DARK ORANGE			
Asbestos Type	None Detected			
Other Fibers				
Cellulose	100%	--	--	--
Non-Fibers				

**Client Sample:** SU-2 **Collection Location:** EXTERIOR SIDING UNDERLAYMENT

**Sample Description:** EXTERIOR SIDING UNDERLAYMENT

**No Asbestos Containing Material Detected** **Friable/Homogeneous:** NO/YES **Layers:** 1

	Layer 1	Intentionally blank	Intentionally blank	Intentionally blank
Description:	EXTERIOR SIDING UN- DERLAYMENT			
Color:	DARK ORANGE			
Asbestos Type	None Detected			
Other Fibers				
Cellulose	100%	--	--	--
Non-Fibers				

**Client Sample:** SU-3 **Collection Location:** EXTERIOR SIDING UNDERLAYMENT

**Sample Description:** EXTERIOR SIDING UNDERLAYMENT

**No Asbestos Containing Material Detected** **Friable/Homogeneous:** NO/YES **Layers:** 1

	Layer 1	Intentionally blank	Intentionally blank	Intentionally blank
Description:	EXTERIOR SIDING UN- DERLAYMENT			
Color:	DARK ORANGE			
Asbestos Type	None Detected			
Other Fibers				
Cellulose	100%	--	--	--
Non-Fibers				

## Certificate of Asbestos Analysis

**Client Sample:** SV-A-1

**Collection Location:** SHEET VINYL - 1st FLOOR CLOSET

**Sample Description:** SHEET VINYL FLOORING

**No Asbestos Containing Material Detected**

**Friable/Homogeneous:** NO/YES

**Layers:** 1

	Layer 1	Intentionally blank	Intentionally blank	Intentionally blank
<b>Description:</b>	SHEET VINYL FLOORING			
<b>Color:</b>	MULTI-COLORED			
<b>Asbestos Type</b>	None Detected			
<b>Other Fibers</b>				
Cellulose	5%	--	--	--
<b>Non-Fibers</b>				
Minerals	95%	--	--	--

**Client Sample:** SV-A-2

**Collection Location:** SHEET VINYL - 1st FLOOR CLOSET

**Sample Description:** SHEET VINYL FLOORING

**No Asbestos Containing Material Detected**

**Friable/Homogeneous:** NO/YES

**Layers:** 1

	Layer 1	Intentionally blank	Intentionally blank	Intentionally blank
<b>Description:</b>	SHEET VINYL FLOORING			
<b>Color:</b>	MULTI-COLORED			
<b>Asbestos Type</b>	None Detected			
<b>Other Fibers</b>				
Cellulose	5%	--	--	--
<b>Non-Fibers</b>				
Minerals	95%	--	--	--

**Client Sample:** SV-A-3

**Collection Location:** SHEET VINYL - 1st FLOOR CLOSET

**Sample Description:** SHEET VINYL FLOORING

**No Asbestos Containing Material Detected**

**Friable/Homogeneous:** NO/YES

**Layers:** 1

	Layer 1	Intentionally blank	Intentionally blank	Intentionally blank
<b>Description:</b>	SHEET VINYL FLOORING			
<b>Color:</b>	MULTI-COLORED			
<b>Asbestos Type</b>	None Detected			
<b>Other Fibers</b>				
Cellulose	5%	--	--	--
<b>Non-Fibers</b>				
Minerals	95%	--	--	--

**Client Sample:** SV-B-1

**Collection Location:** SHEET VINYL - 2nd FLOOR FOYER

**Sample Description:** SHEET VINYL FLOORING

**No Asbestos Containing Material Detected**

**Friable/Homogeneous:** NO/YES

**Layers:** 1

	Layer 1	Intentionally blank	Intentionally blank	Intentionally blank
<b>Description:</b>	SHEET VINYL FLOORING			
<b>Color:</b>	TAN / BLACK			
<b>Asbestos Type</b>	None Detected			
<b>Other Fibers</b>				
Cellulose	5%	--	--	--
<b>Non-Fibers</b>				
Minerals	95%	--	--	--



## Certificate of Asbestos Analysis

**Client Sample:** SV-B-2

**Collection Location:** SHEET VINYL - 2nd FLOOR FOYER

**Sample Description:** SHEET VINYL FLOORING

**No Asbestos Containing Material Detected**

**Friable/Homogeneous:** NO/YES

**Layers:** 1

	Layer 1	Intentionally blank	Intentionally blank	Intentionally blank
<b>Description:</b>	SHEET VINYL FLOORING			
<b>Color:</b>	TAN / BLACK			
<b>Asbestos Type</b>	None Detected			
<b>Other Fibers</b>				
Cellulose	5%	--	--	--
<b>Non-Fibers</b>				
Minerals	95%	--	--	--

**Client Sample:** SV-B-3

**Collection Location:** SHEET VINYL - 2nd FLOOR FOYER

**Sample Description:** SHEET VINYL FLOORING

**No Asbestos Containing Material Detected**

**Friable/Homogeneous:** NO/YES

**Layers:** 1

	Layer 1	Intentionally blank	Intentionally blank	Intentionally blank
<b>Description:</b>	SHEET VINYL FLOORING			
<b>Color:</b>	TAN / BLACK			
<b>Asbestos Type</b>	None Detected			
<b>Other Fibers</b>				
Cellulose	5%	--	--	--
<b>Non-Fibers</b>				
Minerals	95%	--	--	--

**Client Sample:** SV-C-1

**Collection Location:** SHEET VINYL - 2nd FLOOR BEDROOM

**Sample Description:** SHEET VINYL FLOORING

**No Asbestos Containing Material Detected**

**Friable/Homogeneous:** NO/YES

**Layers:** 1

	Layer 1	Intentionally blank	Intentionally blank	Intentionally blank
<b>Description:</b>	SHEET VINYL FLOORING			
<b>Color:</b>	BLACK / BROWN			
<b>Asbestos Type</b>	None Detected			
<b>Other Fibers</b>				
Cellulose	8%	--	--	--
<b>Non-Fibers</b>				
Minerals	92%	--	--	--

**Client Sample:** SV-C-2

**Collection Location:** SHEET VINYL - 2nd FLOOR BEDROOM

**Sample Description:** SHEET VINYL FLOORING

**No Asbestos Containing Material Detected**

**Friable/Homogeneous:** NO/YES

**Layers:** 1

	Layer 1	Intentionally blank	Intentionally blank	Intentionally blank
<b>Description:</b>	SHEET VINYL FLOORING			
<b>Color:</b>	BLACK / BROWN			
<b>Asbestos Type</b>	None Detected			
<b>Other Fibers</b>				
Cellulose	8%	--	--	--
<b>Non-Fibers</b>				
Minerals	92%	--	--	--

## Certificate of Asbestos Analysis

**Client Sample:** SV-C-3

**Collection Location:** SHEET VINYL - 2nd FLOOR BEDROOM

**Sample Description:** SHEET VINYL FLOORING

**No Asbestos Containing Material Detected**

**Friable/Homogeneous:** NO/YES

**Layers:** 1

	Layer 1	Intentionally blank	Intentionally blank	Intentionally blank
<b>Description:</b>	SHEET VINYL FLOORING			
<b>Color:</b>	BLACK / BROWN			
<b>Asbestos Type</b>	None Detected			
<b>Other Fibers</b>				
Cellulose	8%	--	--	--
<b>Non-Fibers</b>				
Minerals	92%	--	--	--

**Client Sample:** SV-D-1

**Collection Location:** SHEET VINYL - 2nd FLOOR BATHROOM

**Sample Description:** SHEET VINYL FLOORING

**No Asbestos Containing Material Detected**

**Friable/Homogeneous:** NO/YES

**Layers:** 1

	Layer 1	Intentionally blank	Intentionally blank	Intentionally blank
<b>Description:</b>	SHEET VINYL FLOORING			
<b>Color:</b>	TAN / BLACK			
<b>Asbestos Type</b>	None Detected			
<b>Other Fibers</b>				
Cellulose	2%	--	--	--
<b>Non-Fibers</b>				
Minerals	98%	--	--	--

**Client Sample:** SV-D-2

**Collection Location:** SHEET VINYL - 2nd FLOOR BATHROOM

**Sample Description:** SHEET VINYL FLOORING

**No Asbestos Containing Material Detected**

**Friable/Homogeneous:** NO/YES

**Layers:** 1

	Layer 1	Intentionally blank	Intentionally blank	Intentionally blank
<b>Description:</b>	SHEET VINYL FLOORING			
<b>Color:</b>	TAN / BLACK			
<b>Asbestos Type</b>	None Detected			
<b>Other Fibers</b>				
Cellulose	2%	--	--	--
<b>Non-Fibers</b>				
Minerals	98%	--	--	--

**Client Sample:** SV-D-3

**Collection Location:** SHEET VINYL - 2nd FLOOR BATHROOM

**Sample Description:** SHEET VINYL FLOORING

**No Asbestos Containing Material Detected**

**Friable/Homogeneous:** NO/YES

**Layers:** 1

	Layer 1	Intentionally blank	Intentionally blank	Intentionally blank
<b>Description:</b>	SHEET VINYL FLOORING			
<b>Color:</b>	TAN / BLACK			
<b>Asbestos Type</b>	None Detected			
<b>Other Fibers</b>				
Cellulose	2%	--	--	--
<b>Non-Fibers</b>				
Minerals	98%	--	--	--

## Certificate of Asbestos Analysis

**Client Sample:** DT-1

**Collection Location:** DUCT INSULATION - 1st & 2nd FLOORS

**Sample Description:** DUCT INSULATION

**Asbestos Containing Material Detected**

**Friable/Homogeneous:** NO/YES

**Layers:** 1

	Layer 1	Intentionally blank	Intentionally blank	Intentionally blank
<b>Description:</b>	DUCT INSULATION			
<b>Color:</b>	GREY			
<b>Asbestos Type</b>				
Chrysotile	40%	--	--	--
<b>Other Fibers</b>				
Cellulose	40%	--	--	--
<b>Non-Fibers</b>				
Minerals	20%	--	--	--

**Client Sample:** DT-2

**Collection Location:** DUCT INSULATION - 1st & 2nd FLOORS

**Sample Description:** DUCT INSULATION

**STOP @ 1ST POSITIVE**

	Intentionally blank	Intentionally blank	Intentionally blank	Intentionally blank
<b>Description:</b>	--	--	--	--
<b>Color:</b>	--	--	--	--

**Client Sample:** DT-3

**Collection Location:** DUCT INSULATION - 1st & 2D FLOORS

**Sample Description:** DUCT INSULATION

**STOP @ 1ST POSITIVE**

	Intentionally blank	Intentionally blank	Intentionally blank	Intentionally blank
<b>Description:</b>	--	--	--	--
<b>Color:</b>	--	--	--	--

**Client Sample:** DT-4-B

**Collection Location:** DUCT INSULATION - BASEMENT

**Sample Description:** DUCT INSULATION

**Asbestos Containing Material Detected**

**Friable/Homogeneous:** NO/YES

**Layers:** 1

	Layer 1	Intentionally blank	Intentionally blank	Intentionally blank
<b>Description:</b>	DUCT INSULATION			
<b>Color:</b>	GREY			
<b>Asbestos Type</b>				
Chrysotile	60%	--	--	--
<b>Other Fibers</b>				
Cellulose	30%	--	--	--
<b>Non-Fibers</b>				
Minerals	10%	--	--	--

**Client Sample:** DT-5-B

**Collection Location:** DUCT INSULATION - BASEMENT

**Sample Description:** DUCT INSULATION

**STOP @ 1ST POSITIVE**

	Intentionally blank	Intentionally blank	Intentionally blank	Intentionally blank
<b>Description:</b>	--	--	--	--
<b>Color:</b>	--	--	--	--

## Certificate of Asbestos Analysis

**Client Sample:** DT-6-B

**Collection Location:** DUCT INSULATION - BASEMENT

**Sample Description:** DUCT INSULATION

**STOP @ 1ST POSITIVE**

	Intentionally blank	Intentionally blank	Intentionally blank	Intentionally blank
<b>Description:</b>	--	--	--	--
<b>Color:</b>	--	--	--	--

**Client Sample:** WG-1

**Collection Location:** WINDOW GLAZING

**Sample Description:** WINDOW GLAZING

**Asbestos Containing Material Detected**

**Friable/Homogeneous:** YES/NO

**Layers:** 1

	Layer 1	Intentionally blank	Intentionally blank	Intentionally blank
<b>Description:</b>	WINDOW GLAZING			
<b>Color:</b>	BROWN			
<b>Asbestos Type</b>				
<b>Chrysotile</b>	3%	--	--	--
<b>Other Fibers</b>				
<b>Cellulose</b>	1%	--	--	--
<b>Non-Fibers</b>				
<b>Minerals</b>	96%	--	--	--

**Client Sample:** WG-2

**Collection Location:** WINDOW GLAZING

**Sample Description:** WINDOW GLAZING

**STOP @ 1ST POSITIVE**

	Intentionally blank	Intentionally blank	Intentionally blank	Intentionally blank
<b>Description:</b>	--	--	--	--
<b>Color:</b>	--	--	--	--

**Client Sample:** WG-3

**Collection Location:** WINDOW GLAZING

**Sample Description:** WINDOW GLAZING

**STOP @ 1ST POSITIVE**

	Intentionally blank	Intentionally blank	Intentionally blank	Intentionally blank
<b>Description:</b>	--	--	--	--
<b>Color:</b>	--	--	--	--

**Client Sample:** CT-1

**Collection Location:** CEILING TILES - 2nd FLOOR BEDROOM

**Sample Description:** CEILING TILE

**No Asbestos Containing Material Detected**

**Friable/Homogeneous:** NO/YES

**Layers:** 1

	Layer 1	Intentionally blank	Intentionally blank	Intentionally blank
<b>Description:</b>	CEILING TILE			
<b>Color:</b>	GOLDEN BROWN			
<b>Asbestos Type</b>	None Detected			
<b>Other Fibers</b>				
<b>Cellulose</b>	100%	--	--	--
<b>Non-Fibers</b>				



## Certificate of Asbestos Analysis

**Client Sample:** CT-2

**Collection Location:** CEILING TILES - 2nd FLOOR BEDROOM

**Sample Description:** CEILING TILE

**No Asbestos Containing Material Detected**

**Friable/Homogeneous:** NO/YES

**Layers:** 1

	Layer 1	Intentionally blank	Intentionally blank	Intentionally blank
<b>Description:</b>	CEILING TILE			
<b>Color:</b>	GOLDEN BROWN			
<b>Asbestos Type</b>	None Detected			
<b>Other Fibers</b>				
Cellulose	100%	--	--	--
<b>Non-Fibers</b>				

**Client Sample:** CT-3

**Collection Location:** CEILING TILES - 2nd FLOOR BEDROOM

**Sample Description:** CEILING TILE

**No Asbestos Containing Material Detected**

**Friable/Homogeneous:** NO/YES

**Layers:** 1

	Layer 1	Intentionally blank	Intentionally blank	Intentionally blank
<b>Description:</b>	CEILING TILE			
<b>Color:</b>	GOLDEN BROWN			
<b>Asbestos Type</b>	None Detected			
<b>Other Fibers</b>				
Cellulose	100%	--	--	--
<b>Non-Fibers</b>				

**Client Sample:** PL-1

**Collection Location:** PLASTER - 1st & 2nd FLOORS

**Sample Description:** PLASTER

**No Asbestos Containing Material Detected**

**Friable/Homogeneous:** NO/YES

**Layers:** 1

	Layer 1	Intentionally blank	Intentionally blank	Intentionally blank
<b>Description:</b>	PLASTER			
<b>Color:</b>	GREY			
<b>Asbestos Type</b>	None Detected			
<b>Other Fibers</b>				
<b>Non-Fibers</b>				
Minerals	100%	--	--	--

**Client Sample:** PL-2

**Collection Location:** PLASTER - 1st & 2nd FLOORS

**Sample Description:** PLASTER

**No Asbestos Containing Material Detected**

**Friable/Homogeneous:** NO/YES

**Layers:** 1

	Layer 1	Intentionally blank	Intentionally blank	Intentionally blank
<b>Description:</b>	PLASTER			
<b>Color:</b>	GREY			
<b>Asbestos Type</b>	None Detected			
<b>Other Fibers</b>				
<b>Non-Fibers</b>				
Minerals	100%	--	--	--

## Certificate of Asbestos Analysis

Client Sample: PL-3		Collection Location: PLASTER - 1st & 2nd FLOORS		
Sample Description: PLASTER		Friable/Homogeneous: NO/YES		
No Asbestos Containing Material Detected		Layers: 1		
	Layer 1	Intentionally blank	Intentionally blank	Intentionally blank
Description:	PLASTER			
Color:	GREY			
Asbestos Type	None Detected			
Other Fibers				
Non-Fibers				
Minerals	100%	--	--	--

Client Sample: PL-4-B		Collection Location: PLASTER CEILING - BASEMENT		
Sample Description: PLASTER CEILING		Friable/Homogeneous: NO/YES		
No Asbestos Containing Material Detected		Layers: 1		
	Layer 1	Intentionally blank	Intentionally blank	Intentionally blank
Description:	PLASTER CEILING			
Color:	TAN			
Asbestos Type	None Detected			
Other Fibers				
Cellulose	1%	--	--	--
Non-Fibers				
Minerals	99%	--	--	--

Client Sample: PL-5-B		Collection Location: PLASTER CEILING - BASEMENT		
Sample Description: PLASTER CEILING		Friable/Homogeneous: NO/YES		
No Asbestos Containing Material Detected		Layers: 1		
	Layer 1	Intentionally blank	Intentionally blank	Intentionally blank
Description:	PLASTER CEILING			
Color:	TAN			
Asbestos Type	None Detected			
Other Fibers				
Cellulose	1%	--	--	--
Non-Fibers				
Minerals	99%	--	--	--

Client Sample: PL-6-B		Collection Location: PLASTER CEILING - BASEMENT		
Sample Description: PLASTER CEILING		Friable/Homogeneous: NO/YES		
No Asbestos Containing Material Detected		Layers: 1		
	Layer 1	Intentionally blank	Intentionally blank	Intentionally blank
Description:	PLASTER CEILING			
Color:	TAN			
Asbestos Type	None Detected			
Other Fibers				
Cellulose	1%	--	--	--
Non-Fibers				
Minerals	99%	--	--	--

## Certificate of Asbestos Analysis

**Client Sample:** RR-1

**Collection Location:** ROLLED RUBBER ROOFING - FRONT PORCH

**Sample Description:** ROLLED RUBBER ROOFING

**No Asbestos Containing Material Detected**

**Friable/Homogeneous:** NO/YES

**Layers:** 1

	Layer 1	Intentionally blank	Intentionally blank	Intentionally blank
<b>Description:</b>	ROLLED RUBBER ROOFING			
<b>Color:</b>	BLACK			
<b>Asbestos Type</b>	None Detected			
<b>Other Fibers</b>				
Cellulose	1%	--	--	--
<b>Non-Fibers</b>				
Minerals	99%	--	--	--

**Client Sample:** RR-2

**Collection Location:** ROLLED RUBBER ROOFING - FRONT PORCH

**Sample Description:** ROLLED RUBBER ROOFING

**No Asbestos Containing Material Detected**

**Friable/Homogeneous:** NO/YES

**Layers:** 1

	Layer 1	Intentionally blank	Intentionally blank	Intentionally blank
<b>Description:</b>	ROLLED RUBBER ROOFING			
<b>Color:</b>	BLACK			
<b>Asbestos Type</b>	None Detected			
<b>Other Fibers</b>				
Cellulose	1%	--	--	--
<b>Non-Fibers</b>				
Minerals	99%	--	--	--

**Client Sample:** RR-3

**Collection Location:** ROLLED RUBBER ROOFING - BACK LOWER ROOF

**Sample Description:** ROLLED RUBBER ROOFING

**No Asbestos Containing Material Detected**

**Friable/Homogeneous:** NO/YES

**Layers:** 1

	Layer 1	Intentionally blank	Intentionally blank	Intentionally blank
<b>Description:</b>	ROLLED RUBBER ROOFING			
<b>Color:</b>	BLACK			
<b>Asbestos Type</b>	None Detected			
<b>Other Fibers</b>				
<b>Non-Fibers</b>				
Minerals	100%	--	--	--

**Client Sample:** I-1

**Collection Location:** INSULATION

**Sample Description:** INSULATION

**No Asbestos Containing Material Detected**

**Friable/Homogeneous:** YES/YES

**Layers:** 1

	Layer 1	Intentionally blank	Intentionally blank	Intentionally blank
<b>Description:</b>	INSULATION			
<b>Color:</b>	BLACK			
<b>Asbestos Type</b>	None Detected			
<b>Other Fibers</b>				
Mineral Wool	99%	--	--	--
<b>Non-Fibers</b>				
Minerals	1%	--	--	--

## Page 12 of 12