



FOR IMMEDIATE RELEASE

Public Notice Regarding Raw Sewage Leak into Local Creek

City of Washington, Illinois – July 7, 2025 – The City of Washington has identified a raw sewage leak affecting a tributary that leads to Farm Creek. City crews worked to remediate the issue.

The leak does **not affect the city's drinking water supply**, and there is no risk to the municipal water system; however, residents are advised to avoid contact with the creek in areas downstream of the leak until further notice. The City of Washington has contacted the Illinois Environmental Protection Agency (IEPA) to inform them of this incident and will be following their recommendations.

The City of Washington took this issue seriously and worked as quickly as possible to address it. Our top priority is protecting public health and the environment.

Any further updates regarding the issue will be provided on the City's website and Facebook pages.

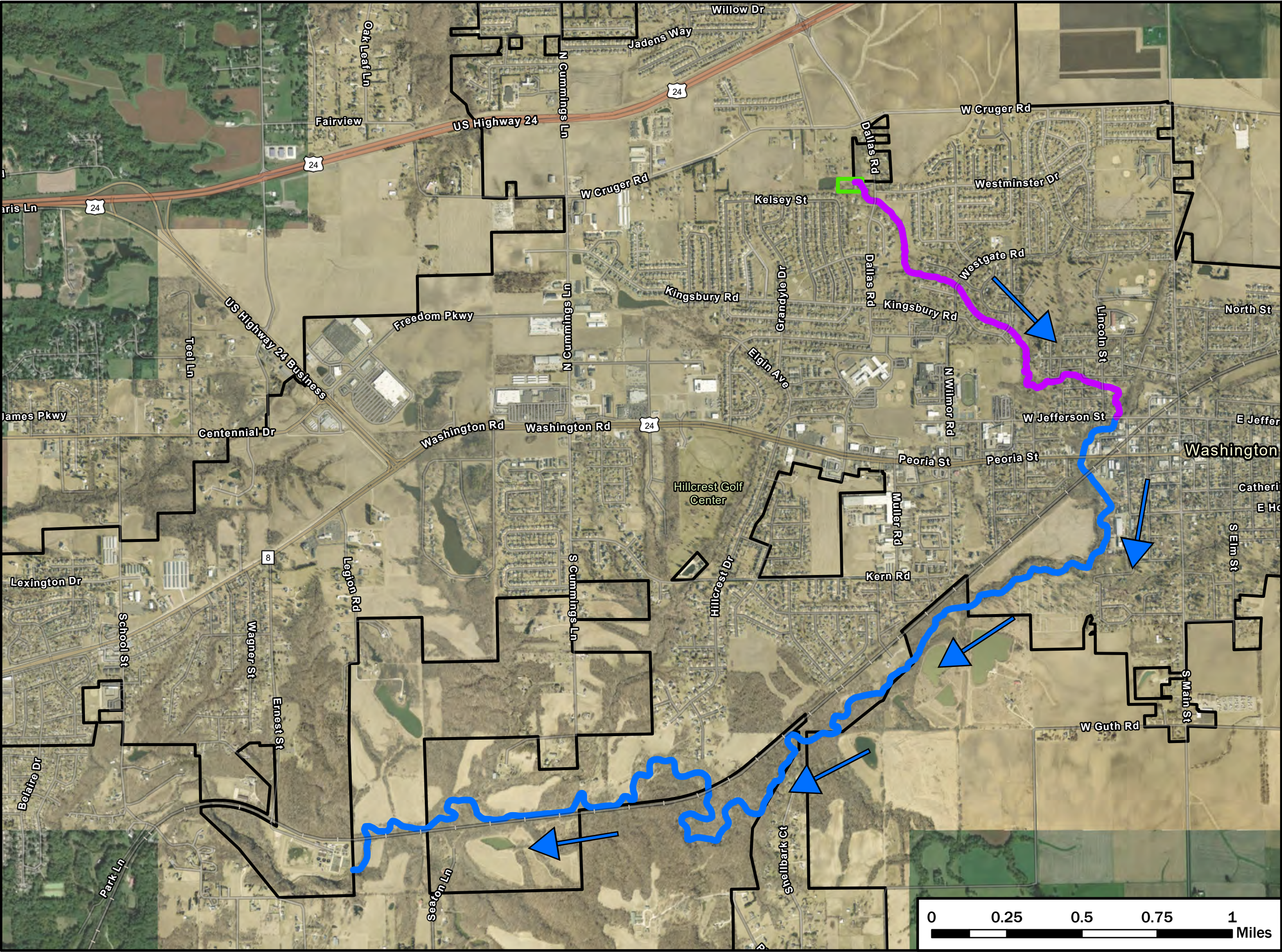
www.ci.washington.il.us

<https://www.facebook.com/CityofWashingtonIL>

Contact Information

City of Washington
301 Walnut Street
Washington, IL. 61571
www.ci.washington.il.us
309-444-3196

###



Sanitary Sewer Backup Overflow

Farm Creek

Legend

-  Tributary to Farm Creek
-  Farm Creek
-  Sewer Area
-  City Boundary



Date: 7/7/2025

This map indicates approximate data locations and may not be 100% accurate. Parcels are provided and maintained by Tazewell County.

