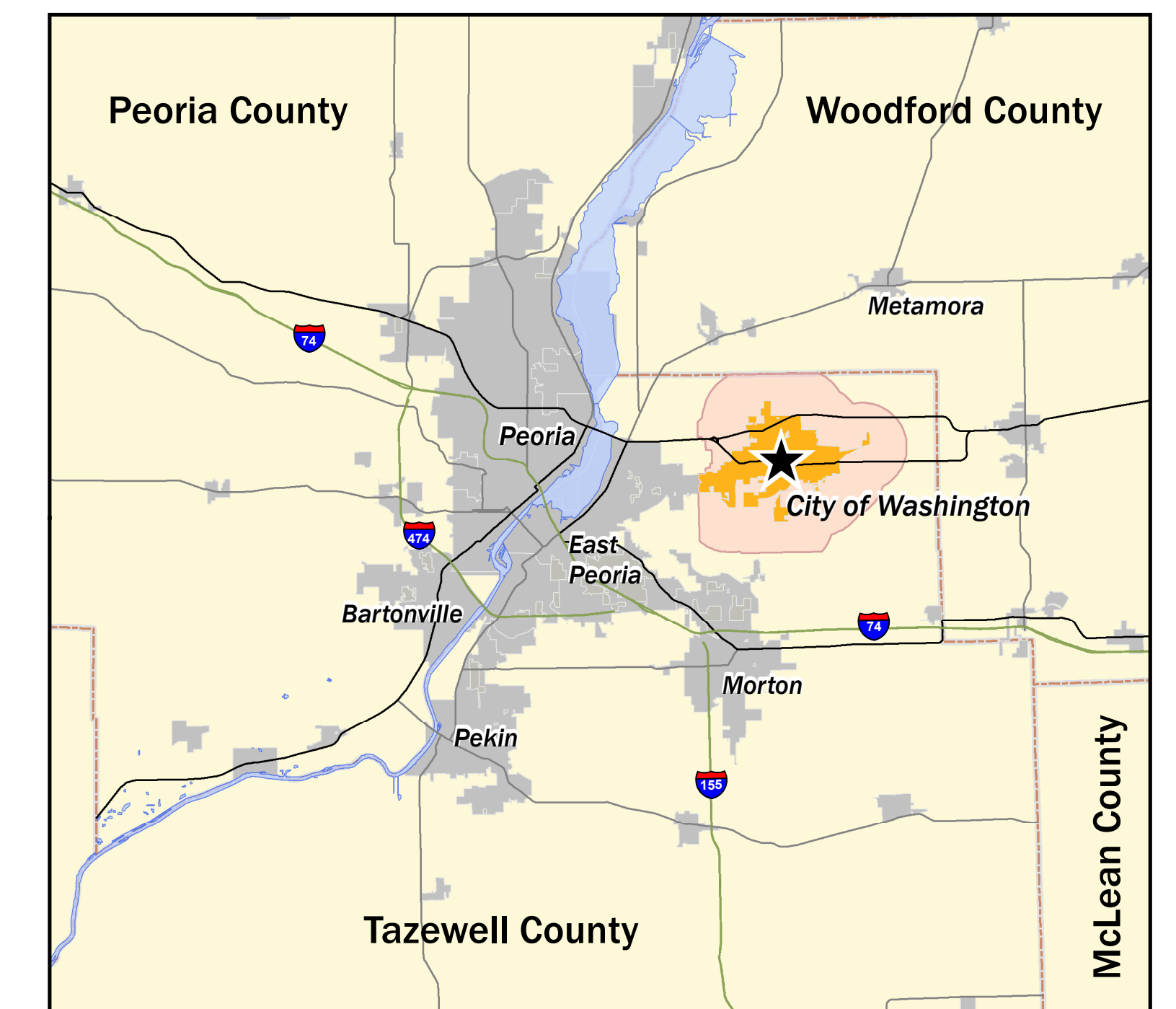


Washington, Illinois was founded in 1825. As of 2017, the US Census recorded 16,566 residents living in the City Washington. Over the past decade, Washington has been among the fastest growing communities in central Illinois with 1,500 new housing starts, new commercial construction totaling about 900,000 square feet, and a 40% growth in population.

CITY OF WASHINGTON

TAZEWELL COUNTY, ILLINOIS
COMPREHENSIVE PLAN

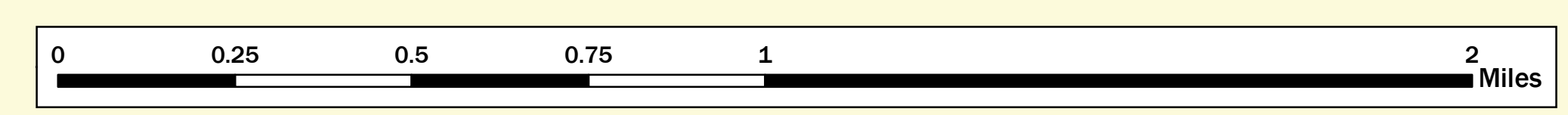
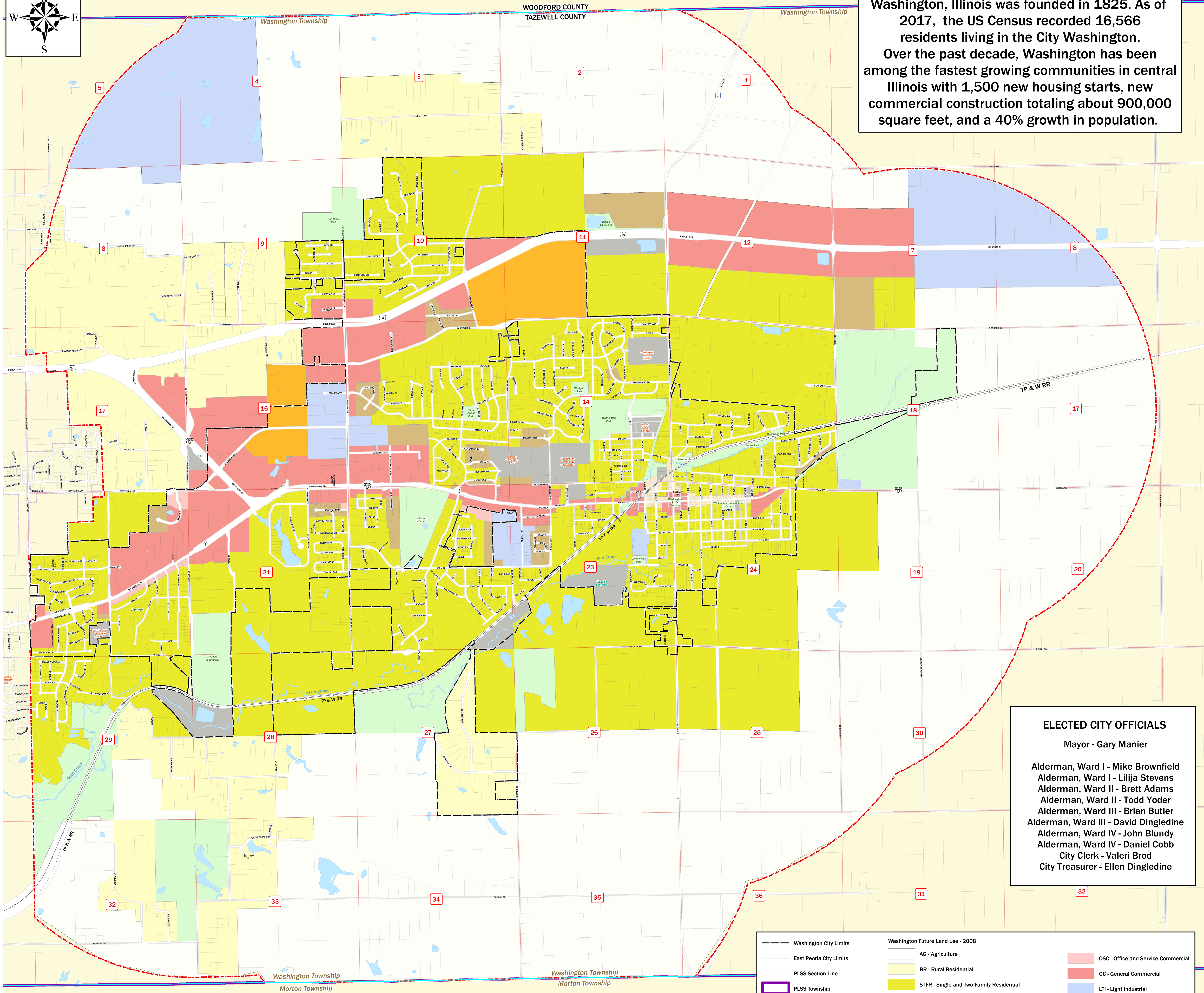


ELECTED CITY OFFICIALS
 Mayor - Gary Manier
 Alderman, Ward I - Mike Brownfield
 Alderman, Ward I - Lilija Stevens
 Alderman, Ward II - Brett Adams
 Alderman, Ward II - Todd Yoder
 Alderman, Ward III - Brian Butler
 Alderman, Ward III - David Dingledine
 Alderman, Ward IV - John Blundy
 Alderman, Ward IV - Daniel Cobb
 City Clerk - Valeri Brod
 City Treasurer - Ellen Dingledine

Map is provided for use as a planning tool & data is provided 'as is' without warranty or any representation of accuracy, timeliness, or completeness. Newly constructed streets or recently annexed areas may not be shown.

Printed: Date: 9/11/2020

Prepared by the City of Washington
 Department of Planning & Development.
 For information contact Planning & Development Director,
 Jon Oliphant, AICP.



Washington City Limits	Washington Future Land Use - 2008	OSC - Office and Service Commercial
East Peoria City Limits	AG - Agriculture	GC - General Commercial
PLSS Section Line	RR - Rural Residential	LTI - Light Industrial
PLSS Township	STFR - Single and Two Family Residential	HWI - Heavy Industrial
1.5 Mile Extra Territorial Jurisdiction	MFR - Multifamily Residential	PBI - Public Institutional
Parcels	MXD - Mixed Use: Downtown Commercial and Residential	PKOS - Parks and Open Space
Water Feature	UV - Urban Village	